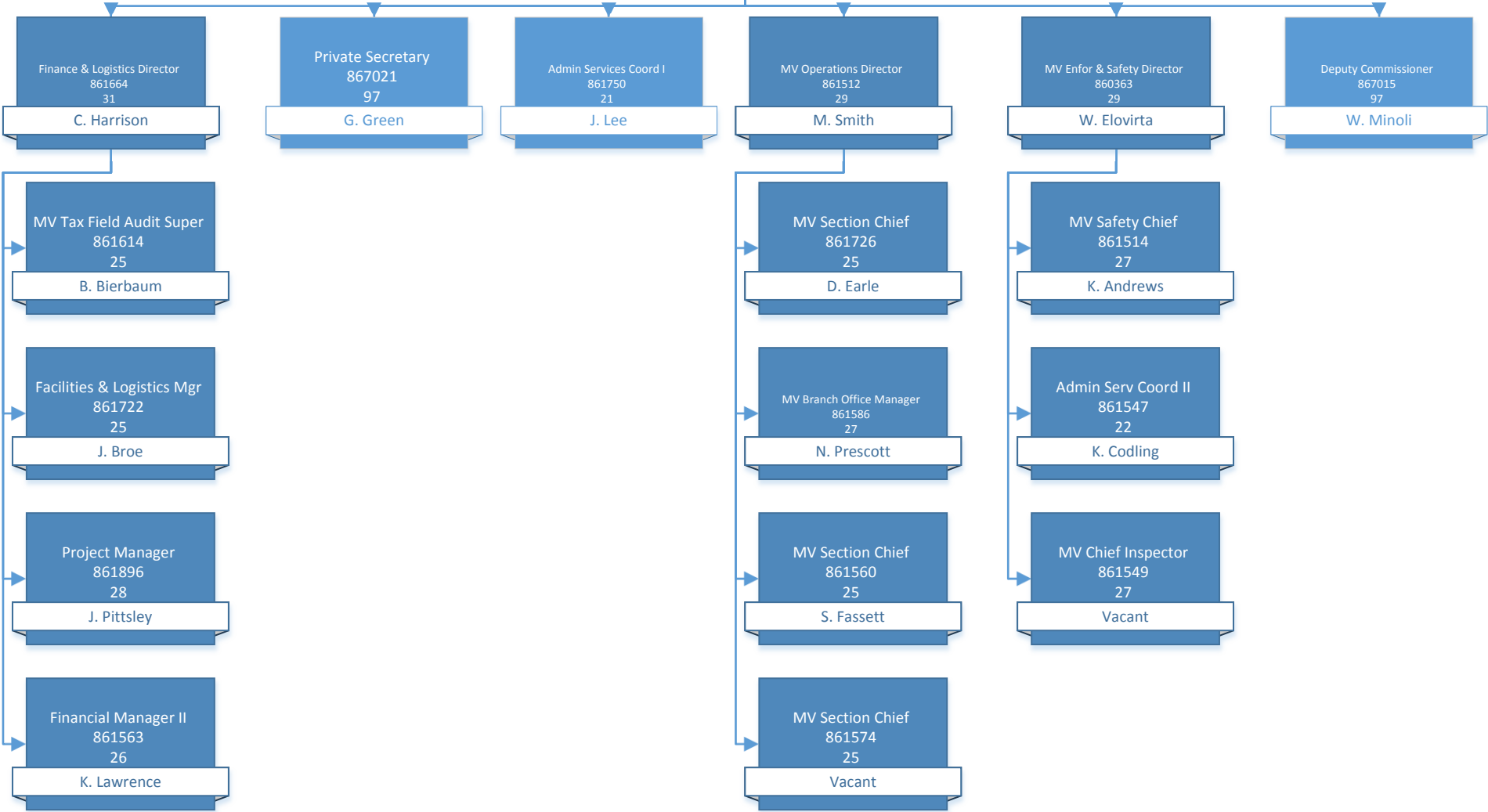
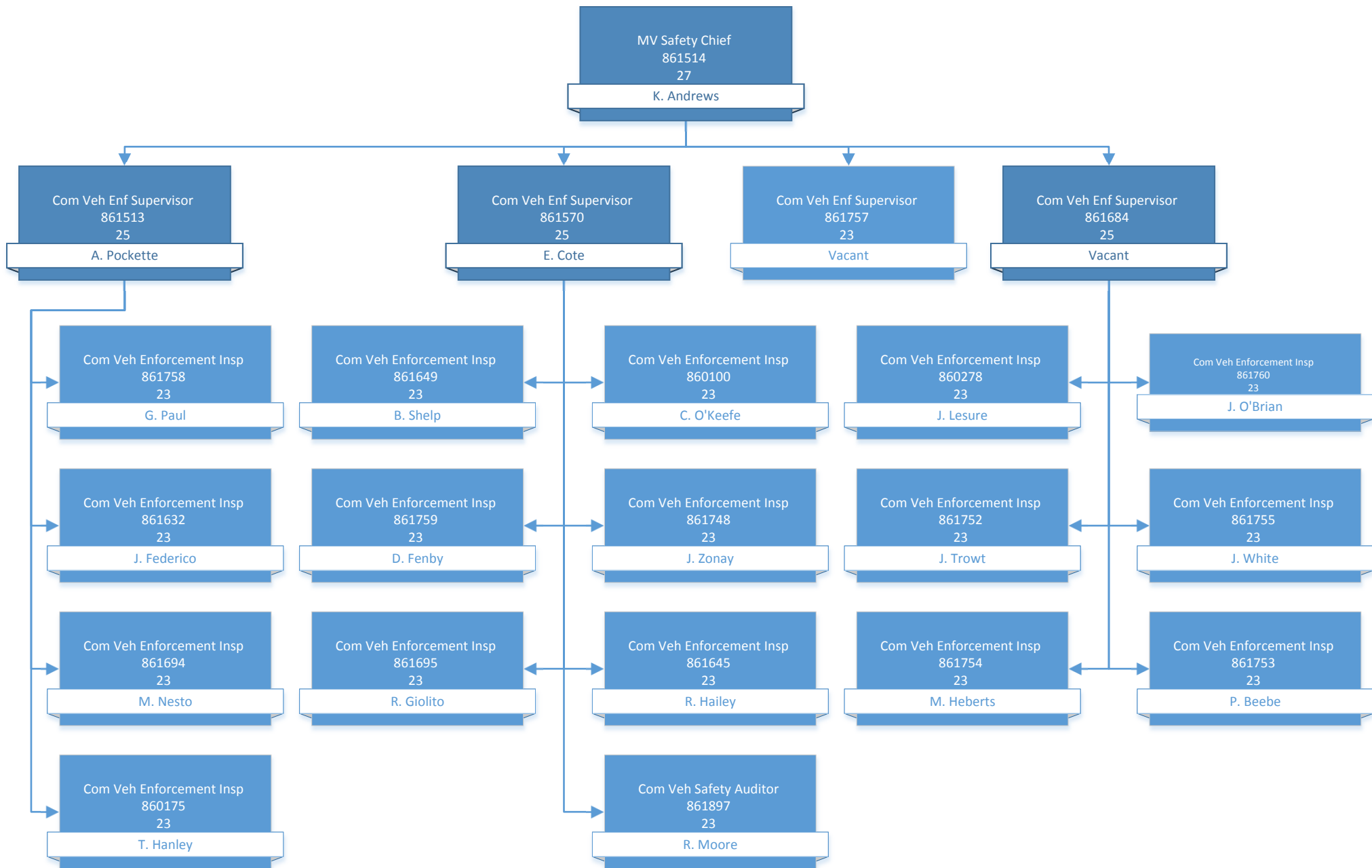
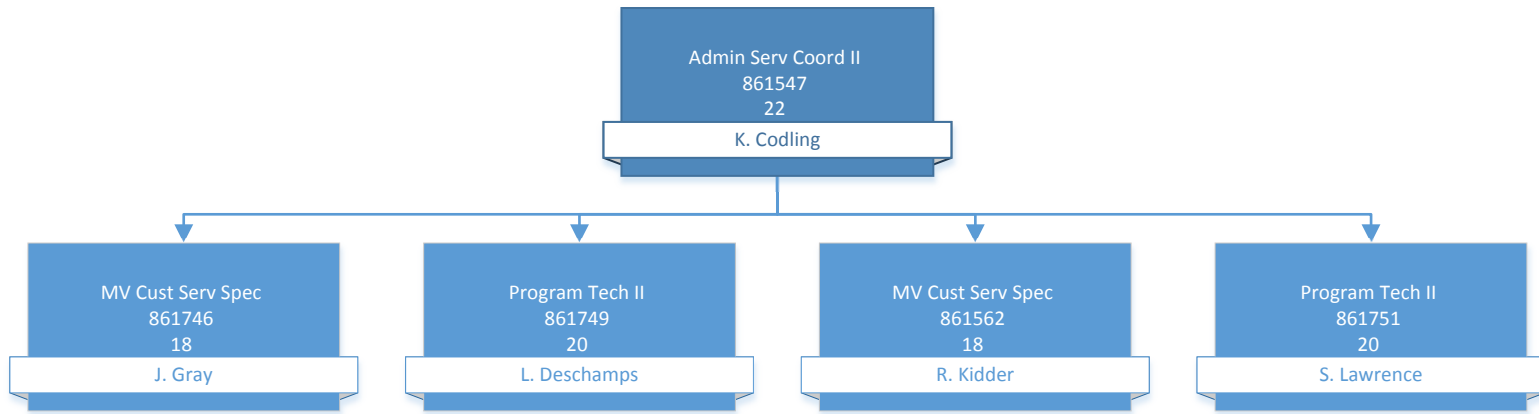


Commissioner
867100
81
R. IDE







MV Chief Inspector
861549
27
Vacant

MV Criminal Unit Supervisor
861506
26
M. McIntyre

Highway Safety Prog Spec
861544
22
N. Andrus

Highway Safety Prog Spec
861736
22
P. Graves

Transportation Prog Spec
860136
22
P. McManamon

MV Criminal Unit Supervisor
861542
25
T. Charland

MV Field Inspector
861903
22
A. Young

MV Field Inspector
861576
22
C. Legault

MV Field Inspector
861515
22
D.M. Fenton

MV Field Inspector
861508
22
D. Evans

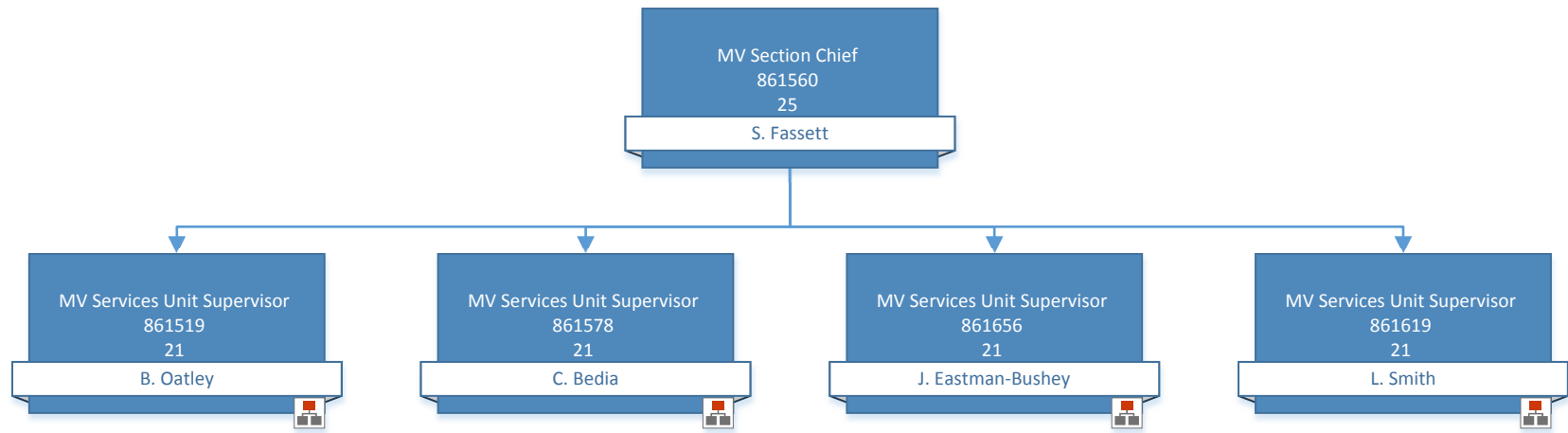
MV Criminal Investigator
861685
24
J. Desjardins

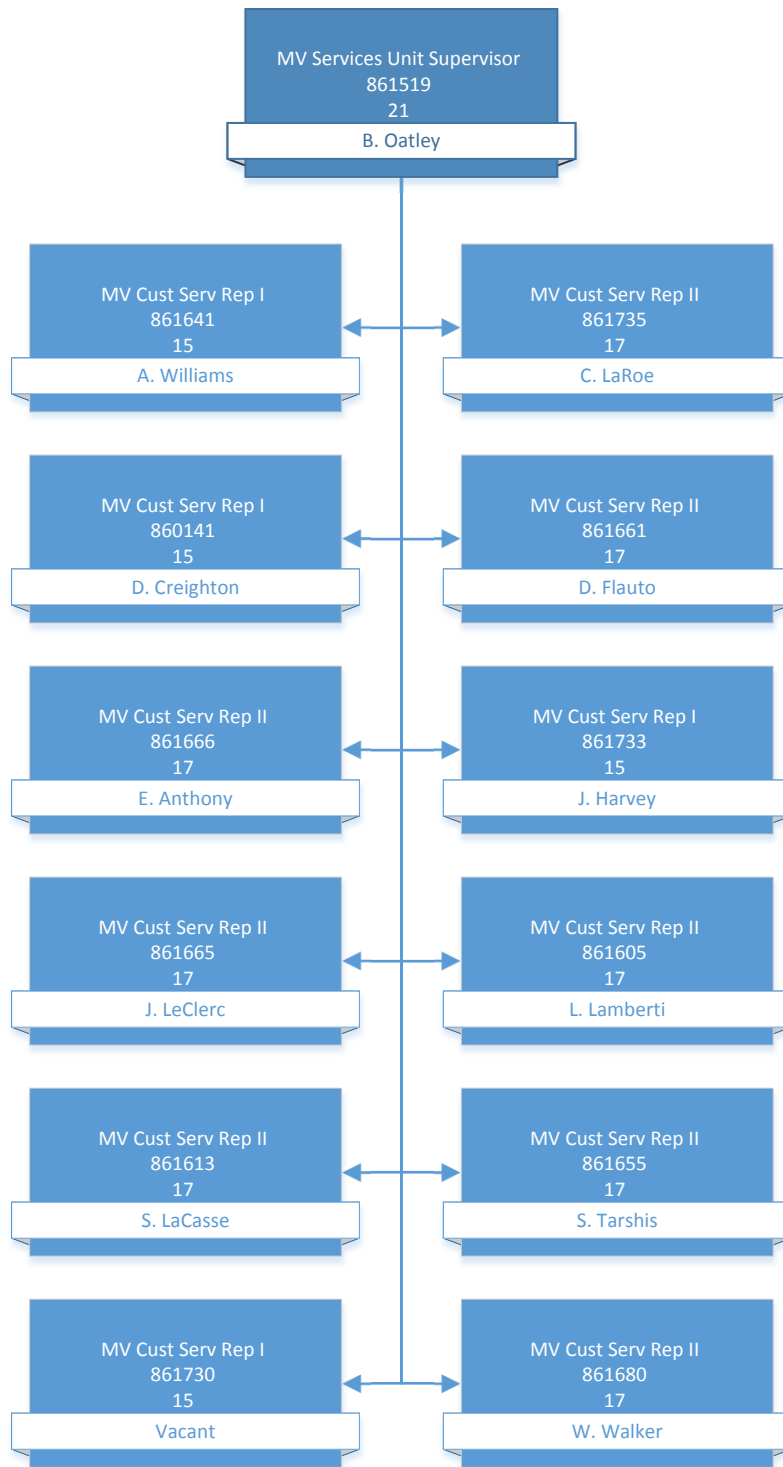
MV Criminal Investigator
861688
23
M. Morris

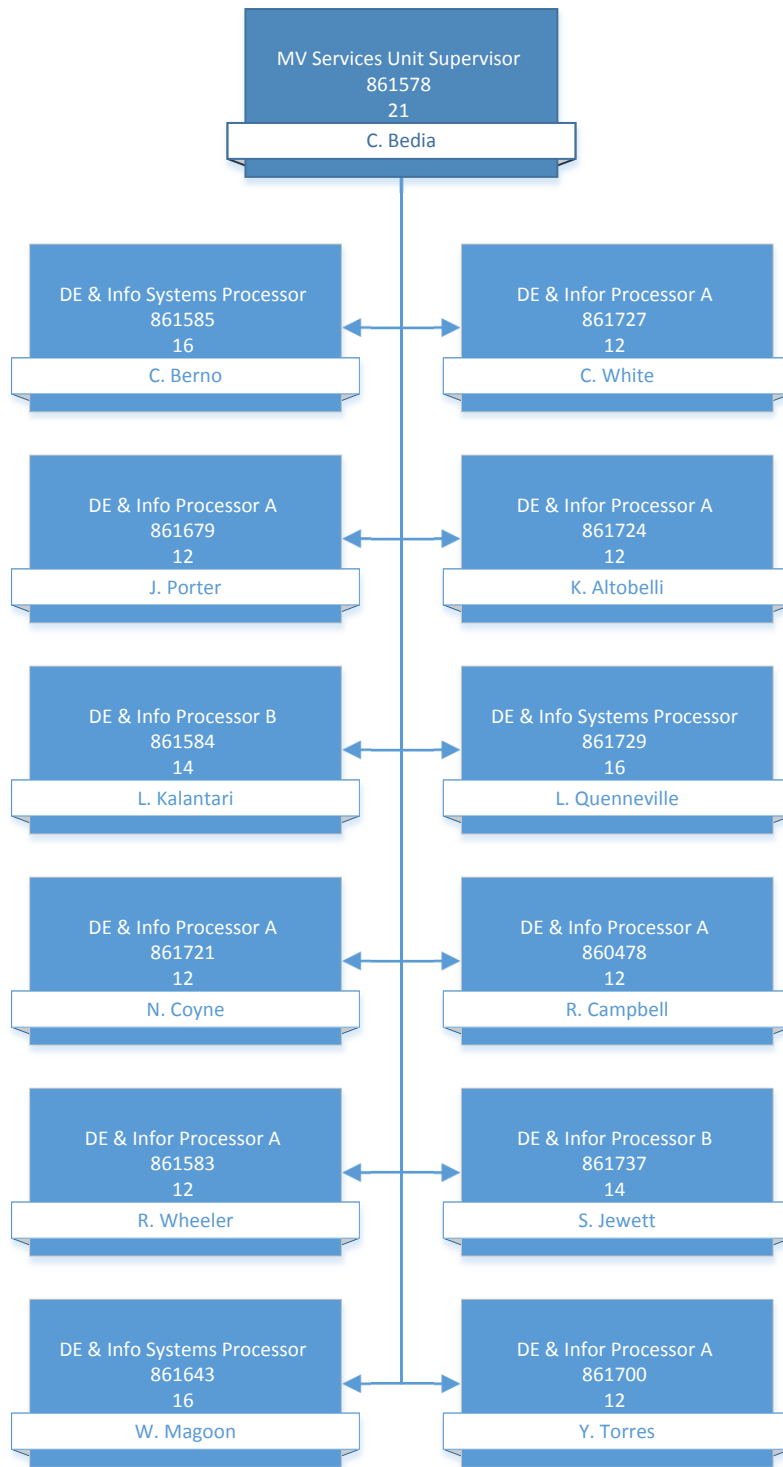
MV Criminal Investigator
861633
24
J. Purdy

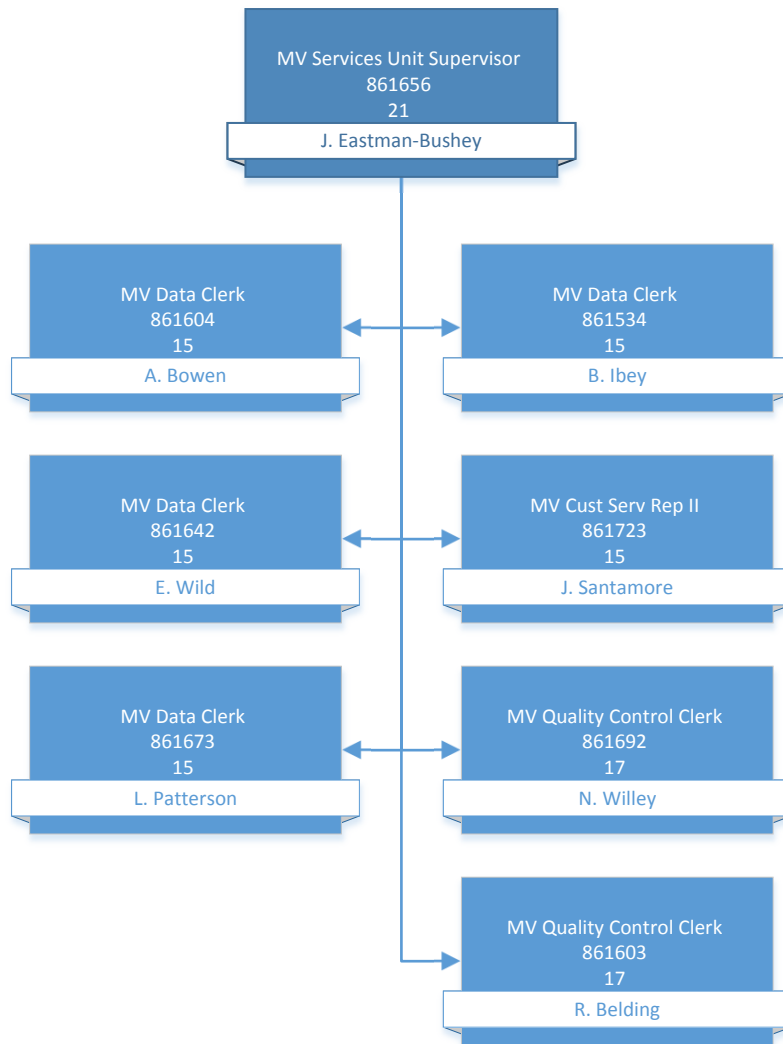
MV Field Inspector
861657
22
M. Southworth

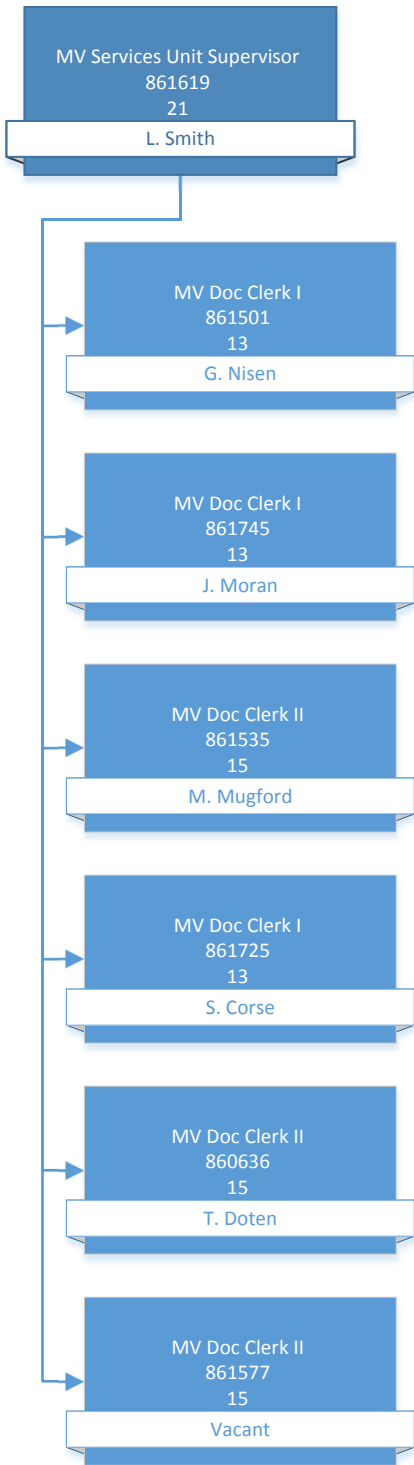
MV Criminal Investigator
861687
23
P. Bottino

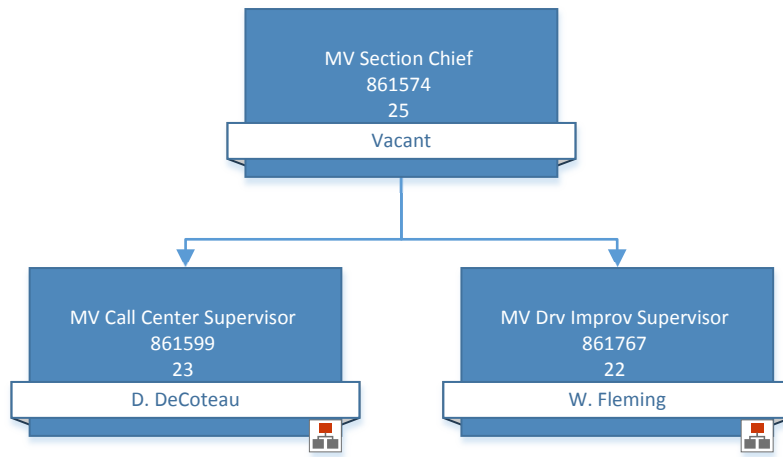


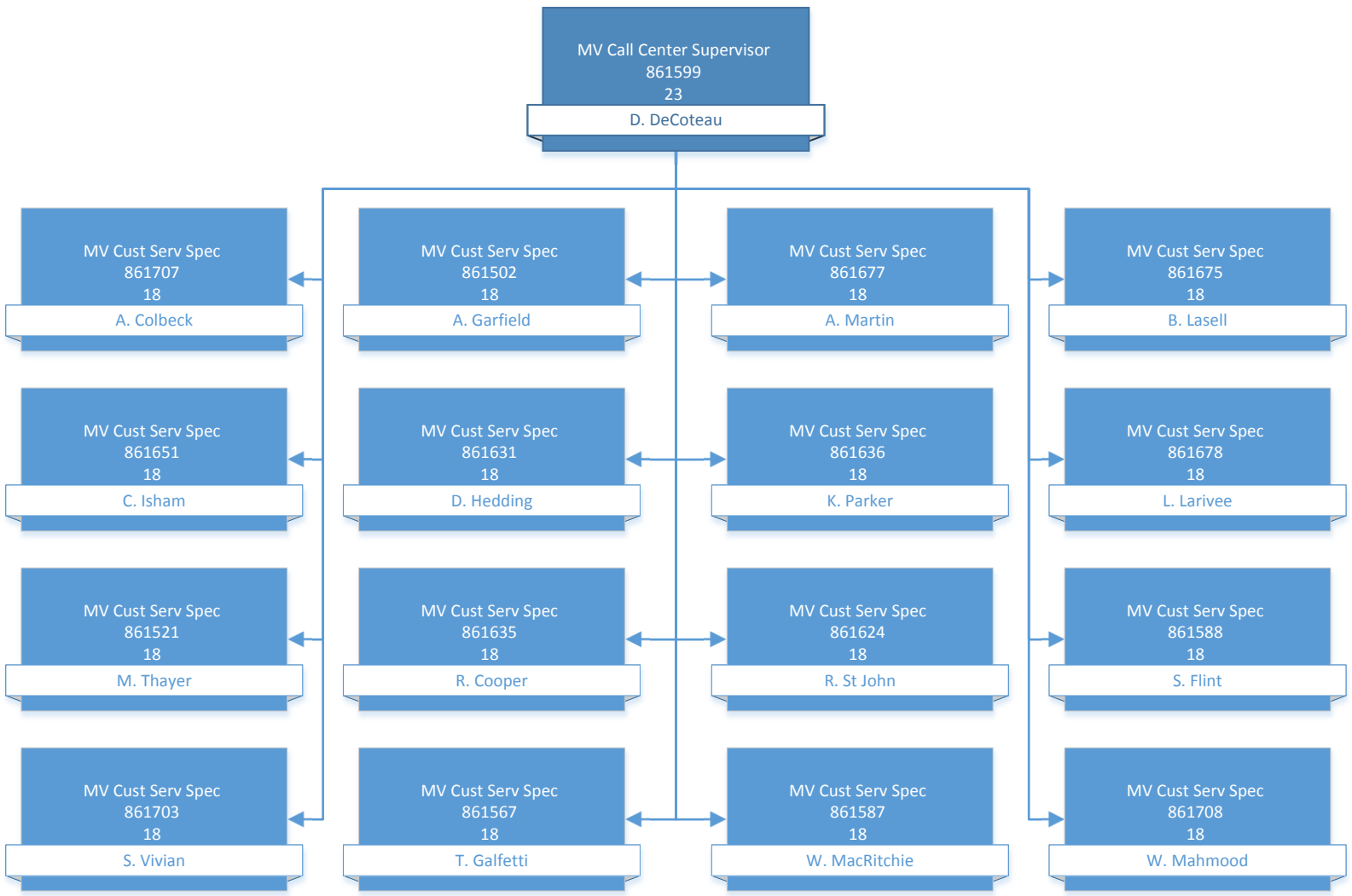


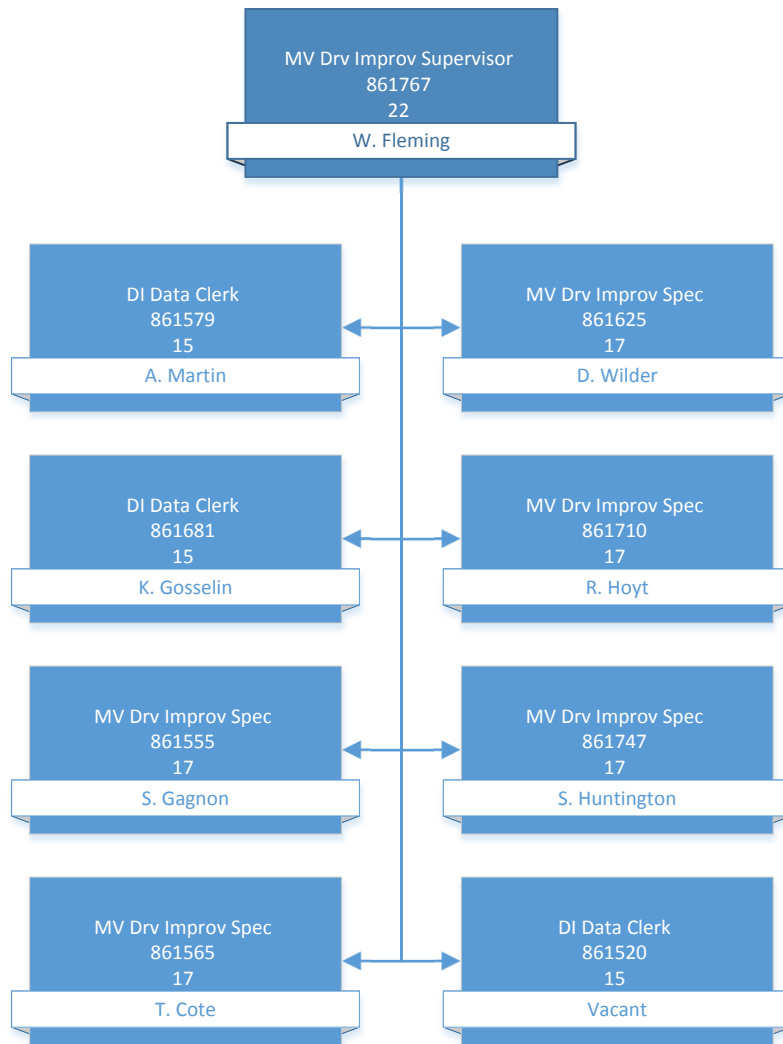


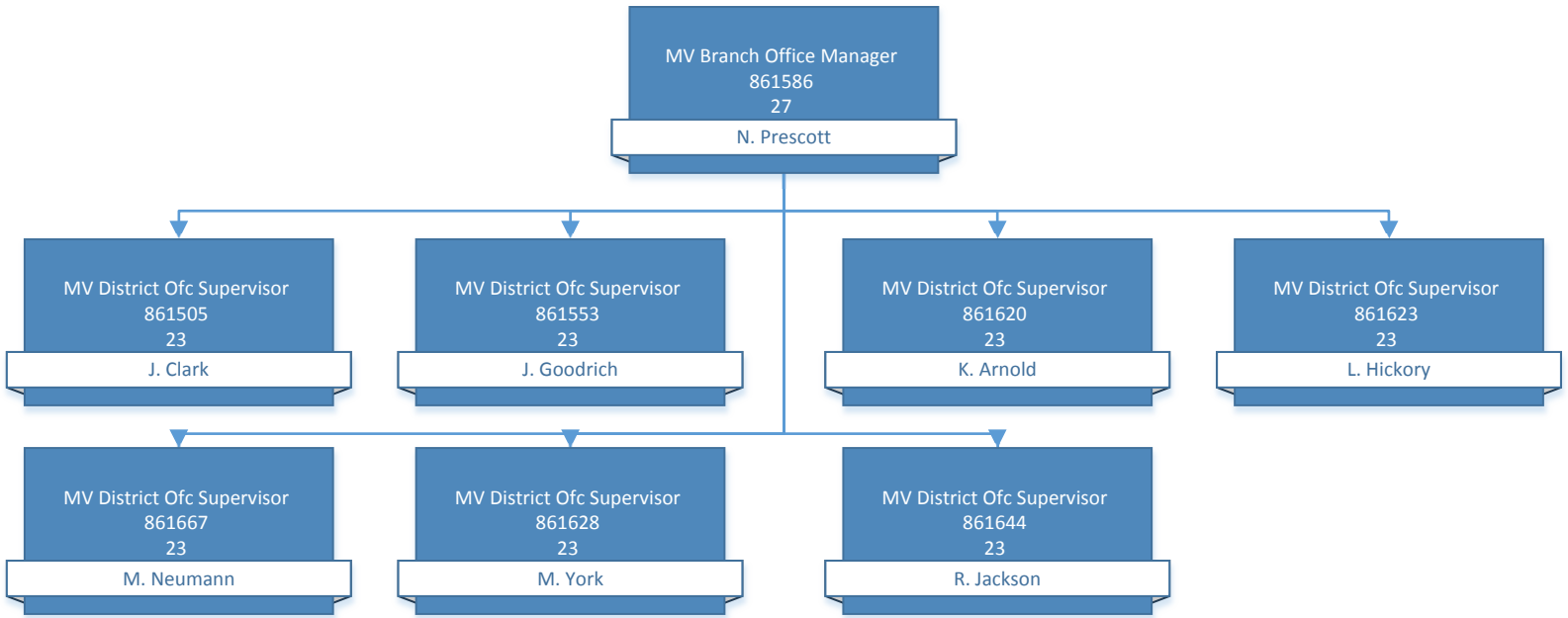


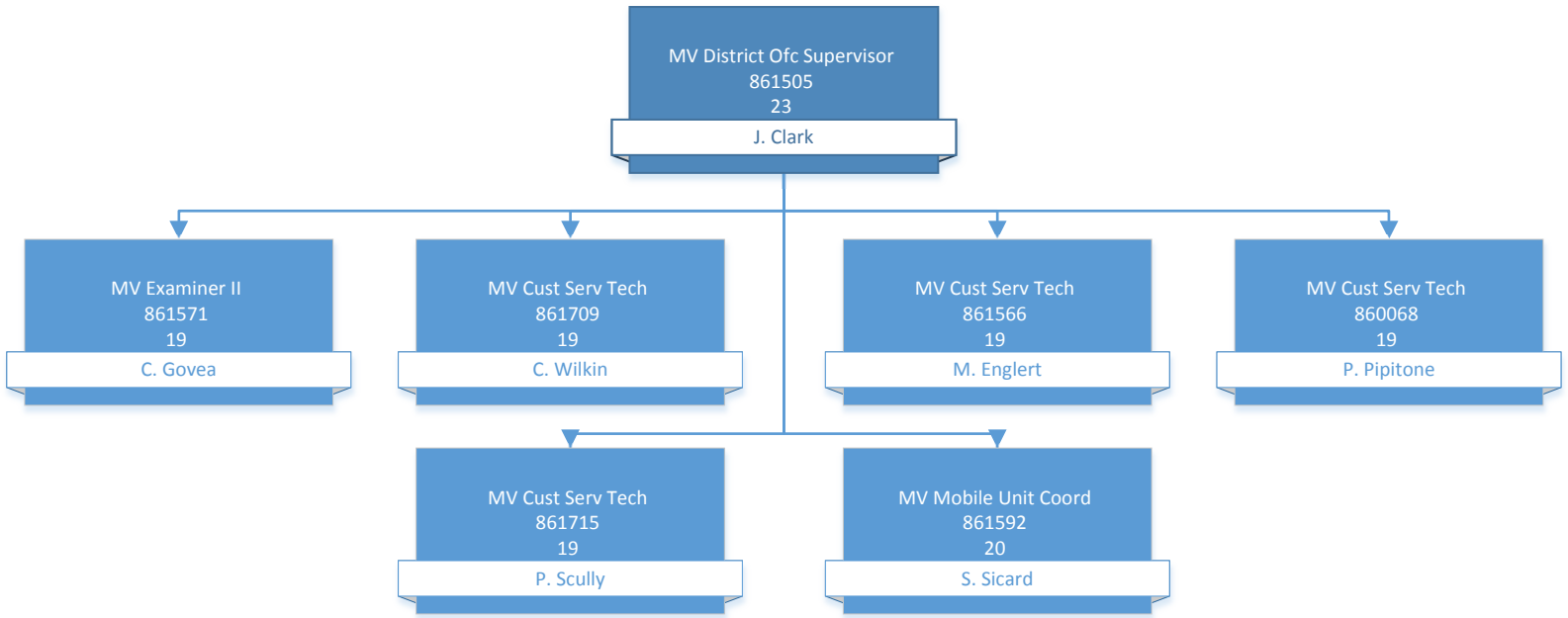




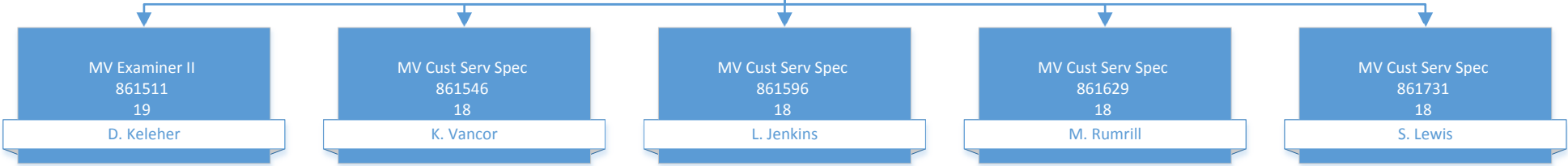


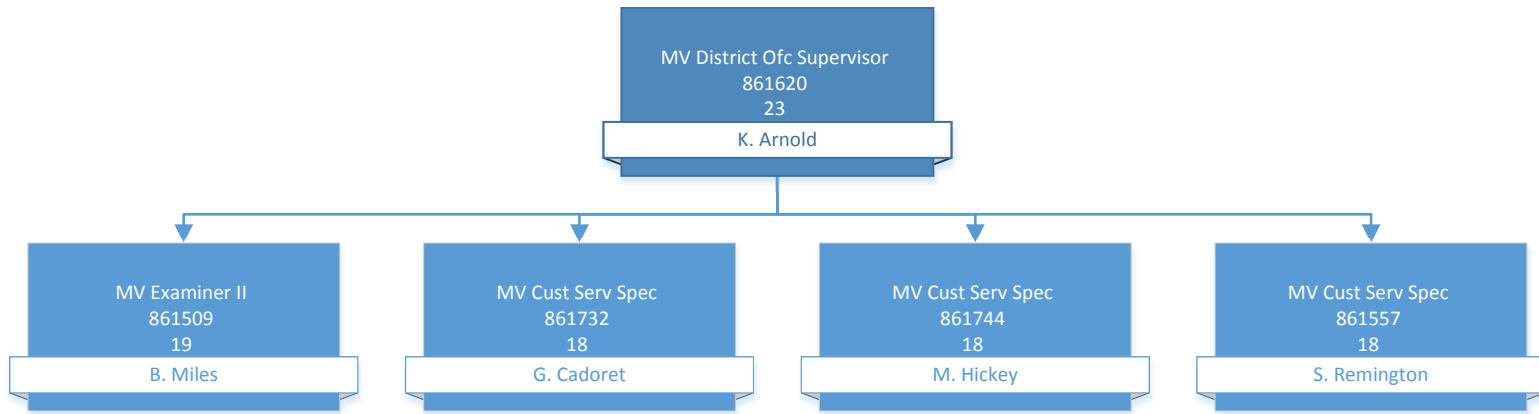


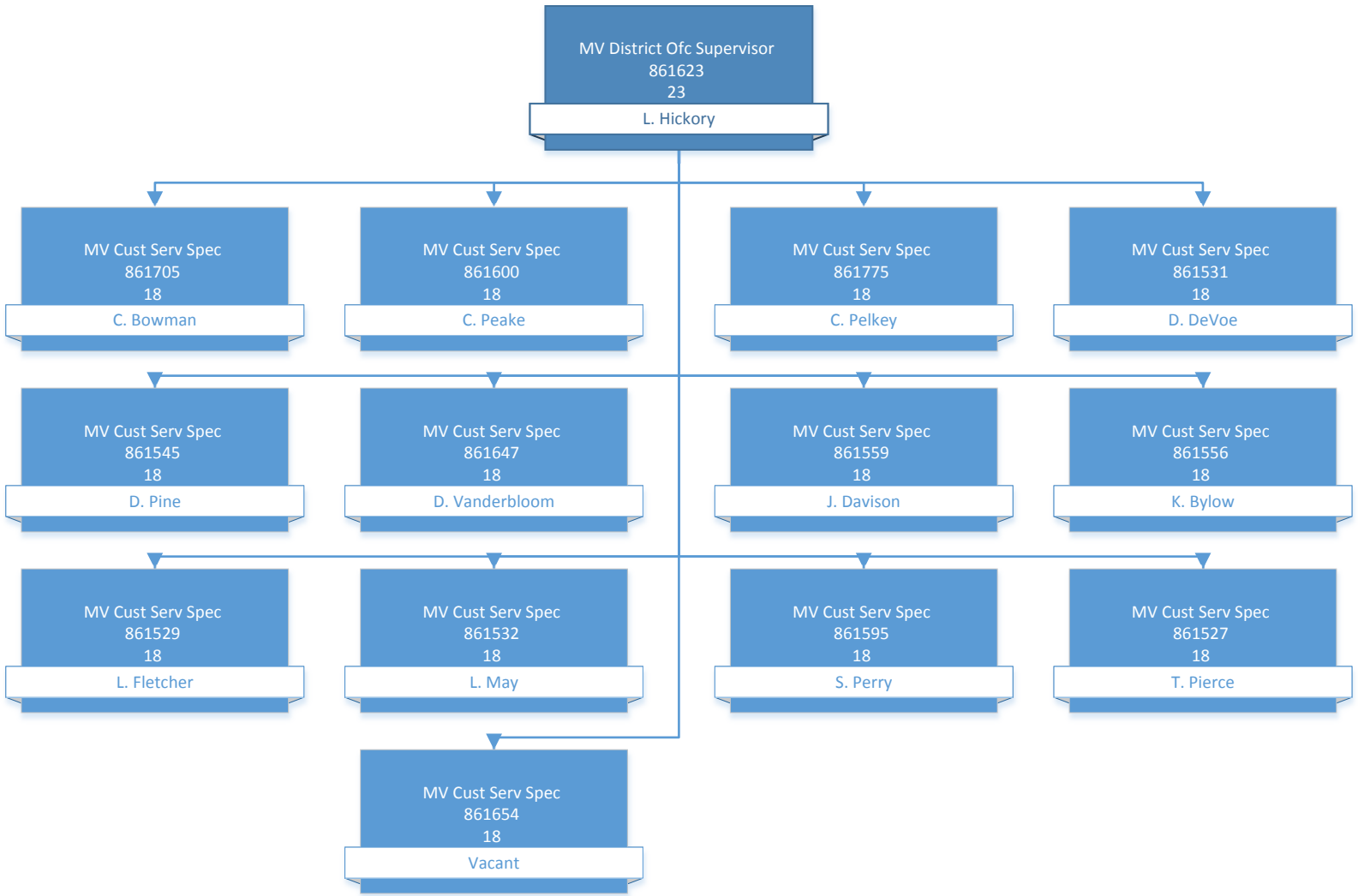


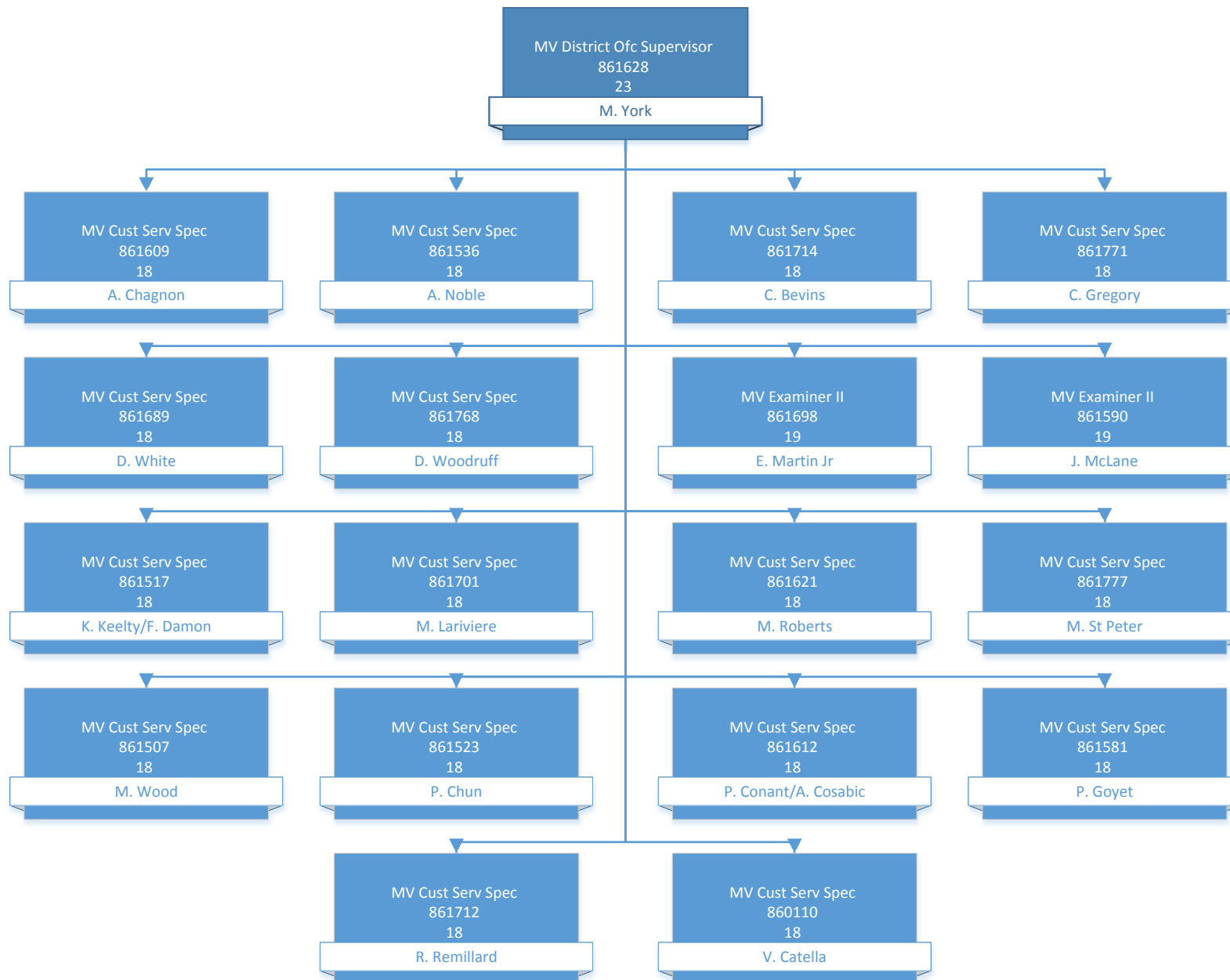


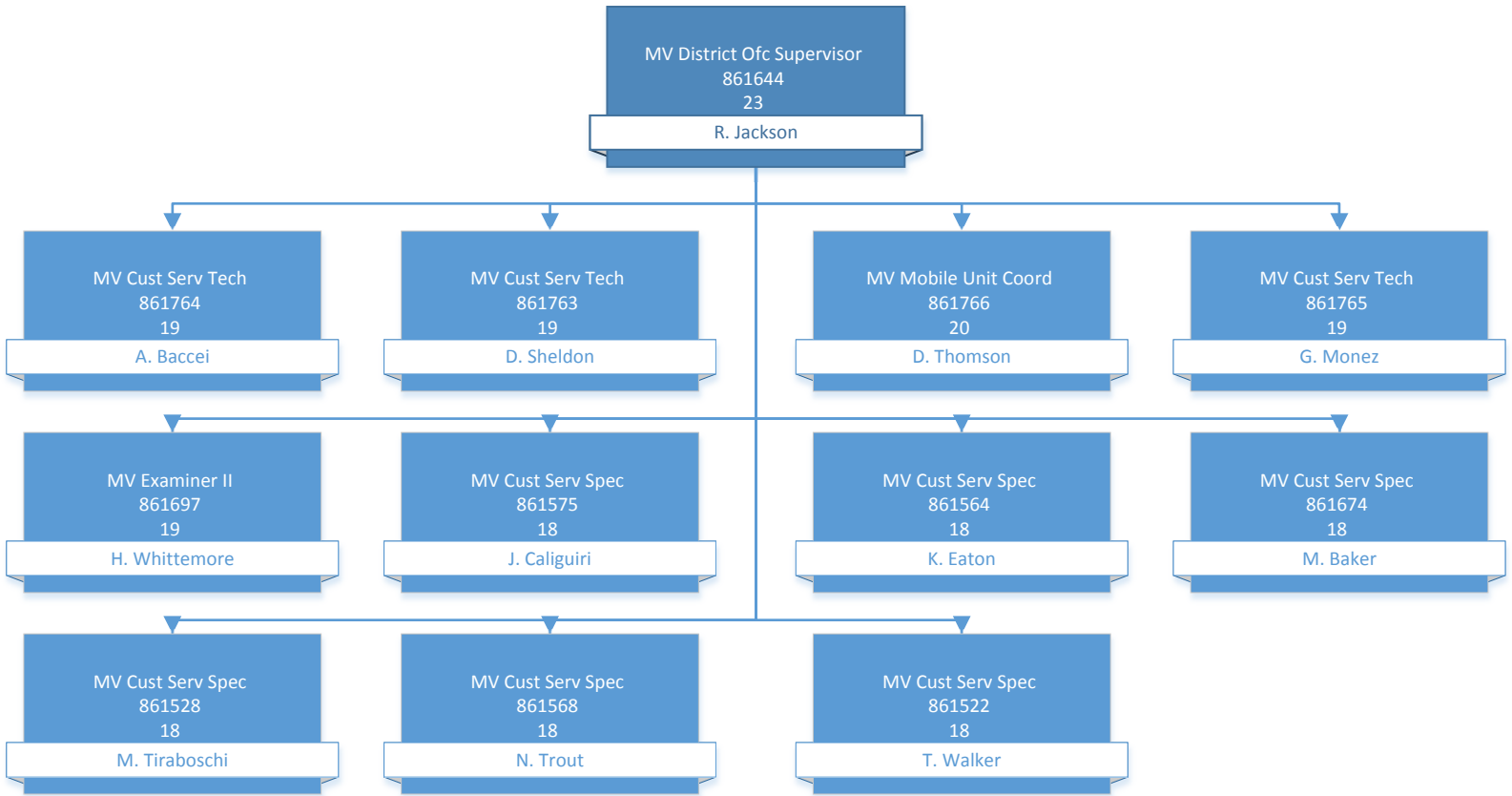
MV District Ofc Supervisor
861553
23
J. Goodrich

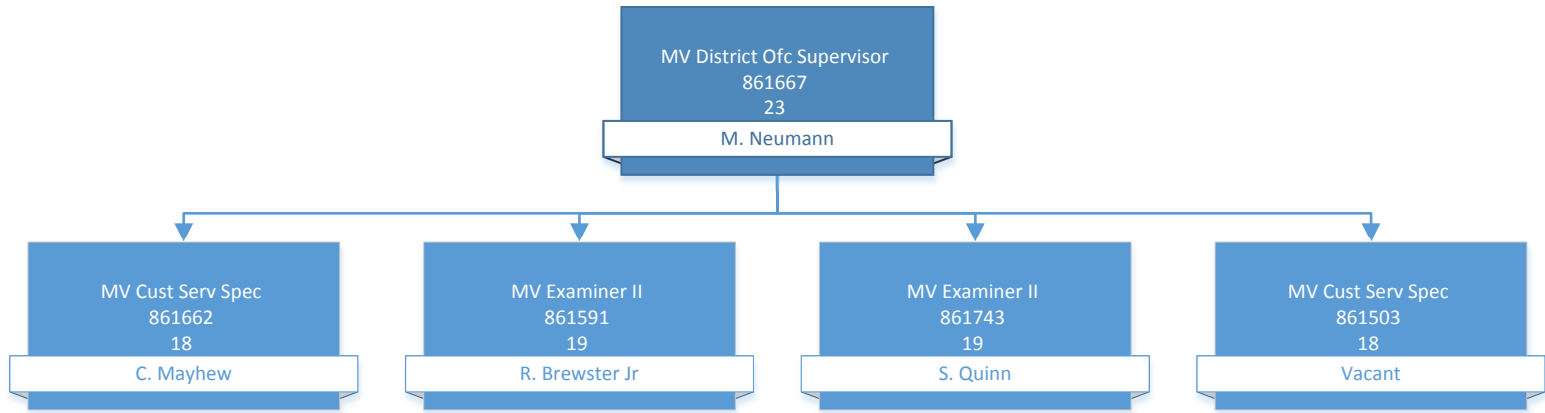


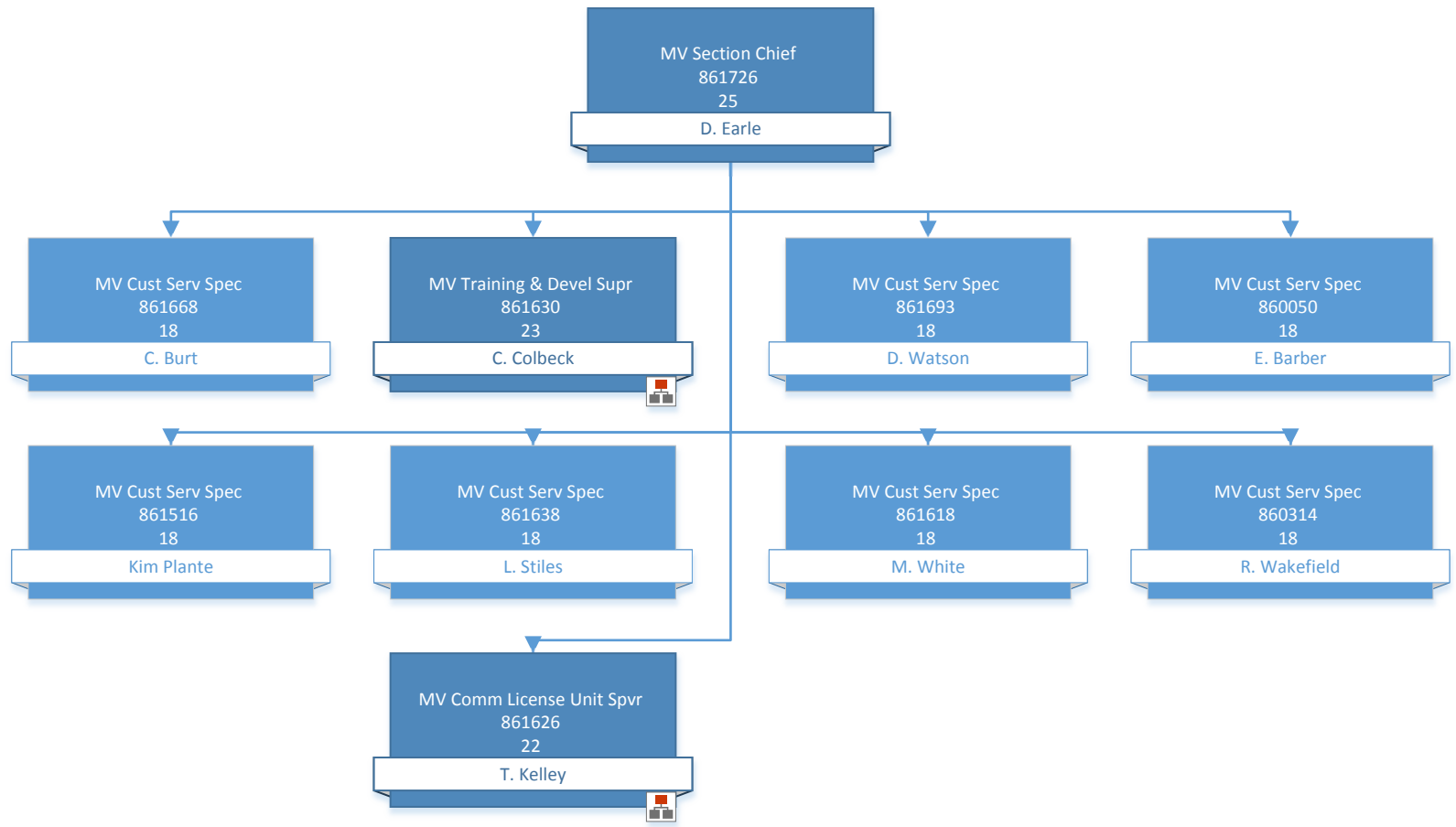


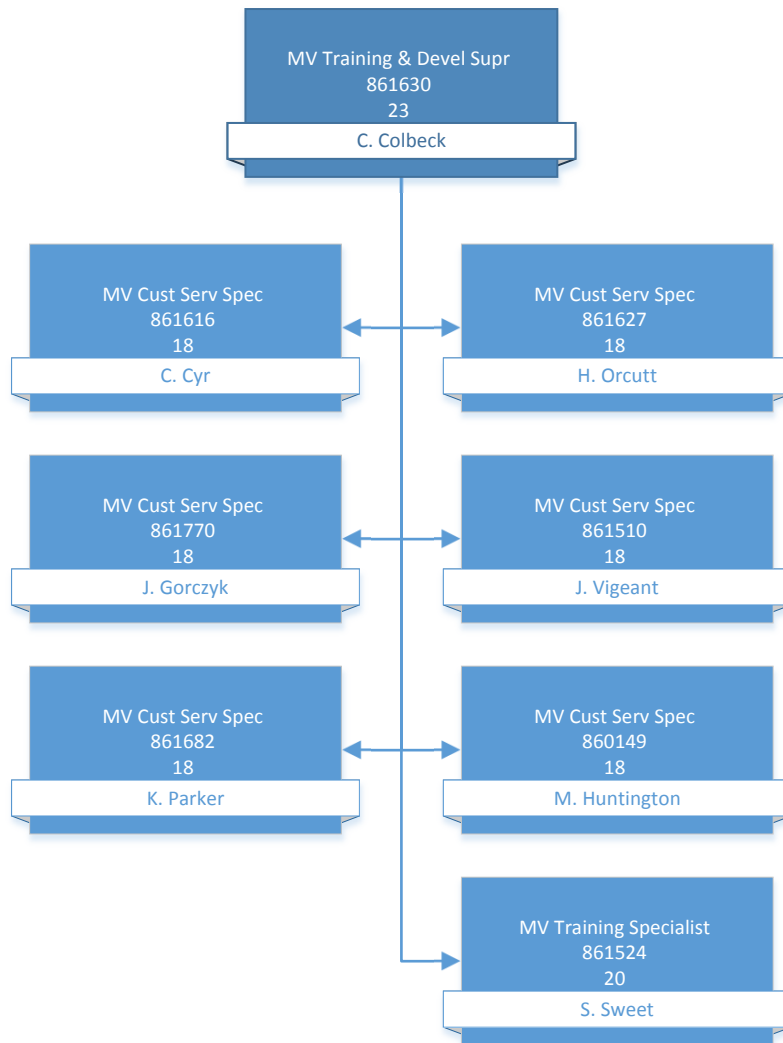




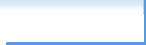








MV Comm License Unit Spvr
861626
22
T. Kelley



MV Cust Serv Spec
861774
18
D. Vasseur

MV Cust Serv Spec
861611
18
K. LaRoe

Adm Asst B
861554
19
V. Bowman

