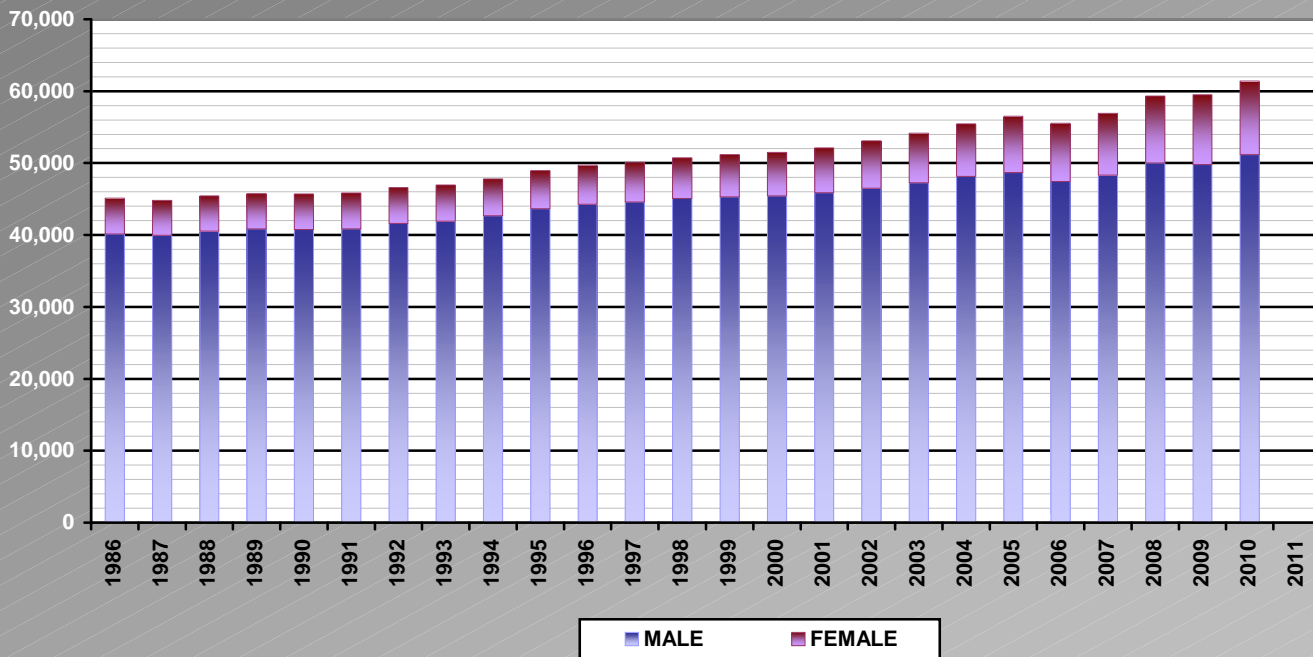


**NUMBER OF MOTORCYCLE ENDORSEMENTS  
IN EFFECT (BY GENDER) 1986 – 2010**

*Extracted from computer-generated statistical reports*

	1981	1982	1983	1984	1985	1986	1987	1988	1989	1990
<b>MALE</b>						40,160	39,941	40,538	40,837	40,771
<b>FEMALE</b>						4,956	4,888	4,896	4,915	4,924
<b>TOTAL</b>						45,116	44,829	45,434	45,752	45,695
	1991	1992	1993	1994	1995	1996	1997	1998	1999	2000
<b>MALE</b>	40,868	41,606	41,922	42,660	43,659	44,278	44,597	45,067	45,287	45,440
<b>FEMALE</b>	4,952	5,001	5,037	5,139	5,307	5,442	5,511	5,654	5,908	6,060
<b>TOTAL</b>	45,820	46,607	46,959	47,799	48,966	49,720	50,108	50,721	51,195	51,500
	2001	2002	2003	2004	2005	2006	2007	2008	2009	2010
<b>MALE</b>	45,873	46,506	47,254	48,154	48,686	47,450	48,321	50,032	49,794	51,157
<b>FEMALE</b>	6,256	6,568	6,891	7,292	7,830	8,079	8,617	9,287	9,705	10,250
<b>TOTAL</b>	52,500	53,074	54,145	55,446	56,516	55,529	56,938	59,319	59,499	61,408

Motorcycle Endorsements (By Gender)

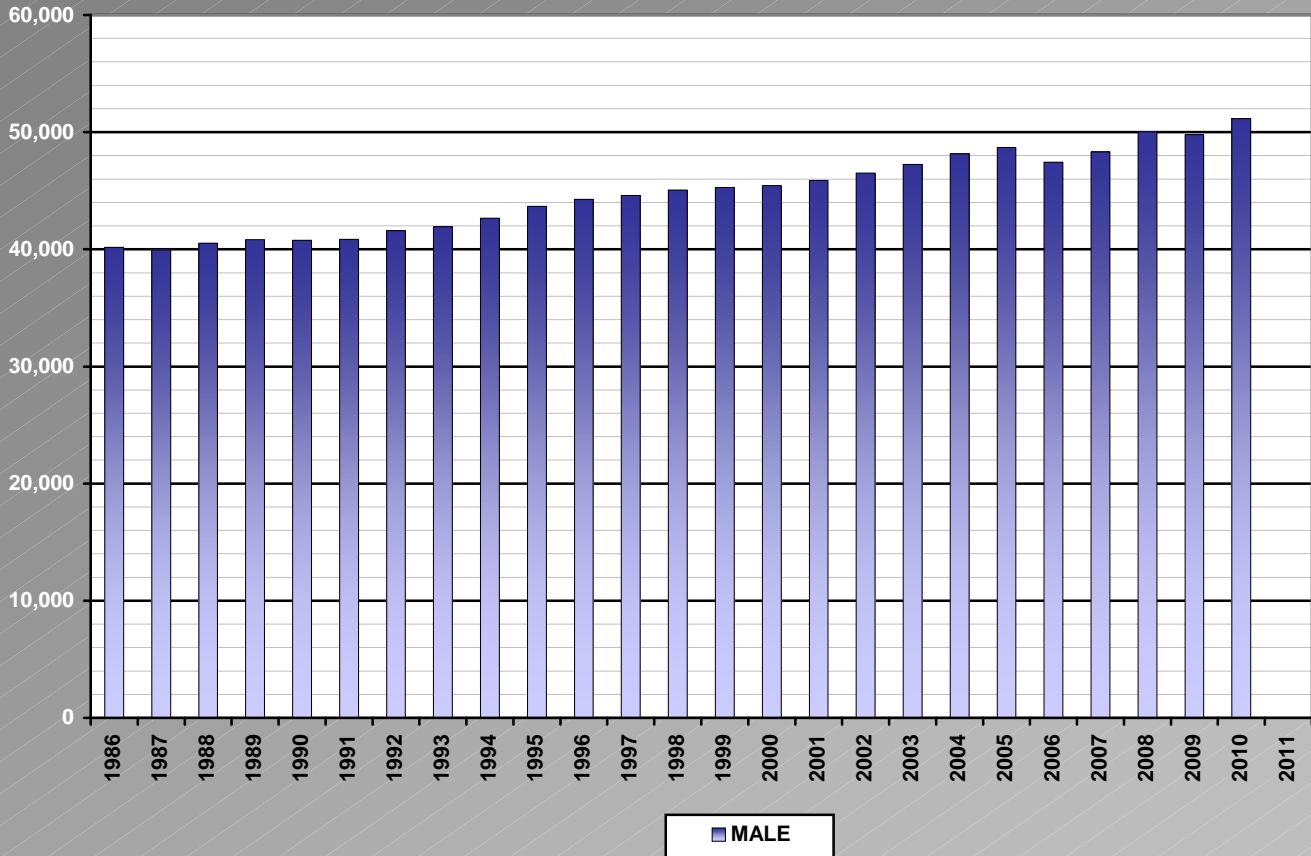


**NUMBER OF MOTORCYCLE ENDORSEMENTS  
IN EFFECT (BY GENDER) 1986 – 2010**

*Extracted from computer-generated statistical reports*

<b>MALE</b>	1981	1982	1983	1984	1985	1986	1987	1988	1989	1990
						40,160	39,941	40,538	40,837	40,771
	1991	1992	1993	1994	1995	1996	1997	1998	1999	2000
	40,868	41,606	41,922	42,660	43,659	44,278	44,597	45,067	45,287	45,440
2001	2002	2003	2004	2005	2006	2007	2008	2009	2010	
45,873	46,506	47,254	48,154	48,686	47,450	48,321	50,032	49,794	51,157	

Motorcycle Endorsements (Males)



**NUMBER OF MOTORCYCLE ENDORSEMENTS  
IN EFFECT (BY GENDER) 1986 – 2010**

*Extracted from computer-generated statistical reports*

<b>FEMALE</b>	1981	1982	1983	1984	1985	1986	1987	1988	1989	1990
							4,956	4,888	4,896	4,915
	1991	1992	1993	1994	1995	1996	1997	1998	1999	2000
	4,952	5,001	5,037	5,139	5,307	5,442	5,511	5,654	5,908	6,060
	2001	2002	2003	2004	2005	2006	2007	2008	2009	2010
	6,256	6,568	6,891	7,292	7,830	8,079	8,617	9,287	9,705	10,251

Motorcycle Endorsements (Females)

