

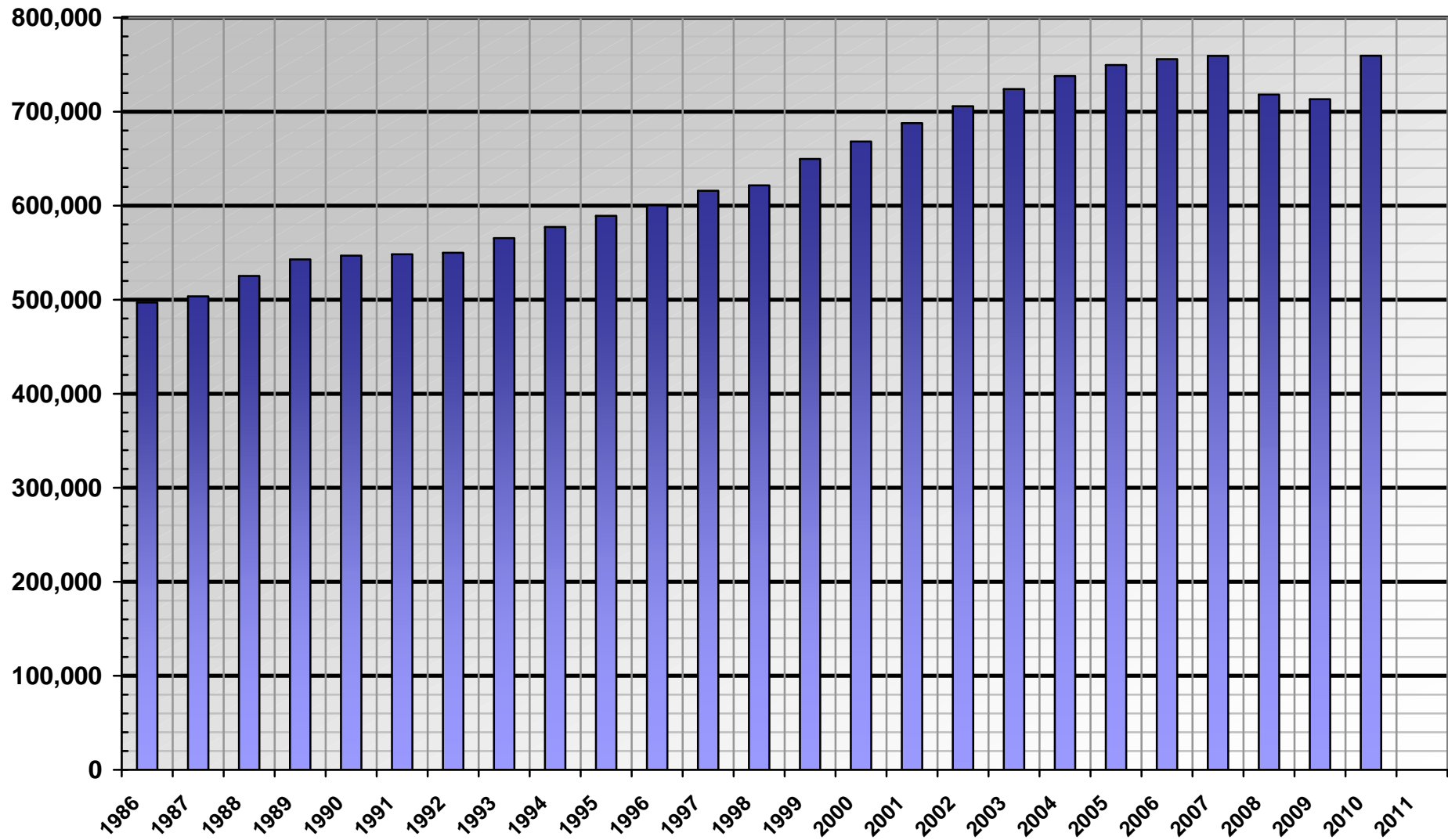


Vehicle Type	1986	1987	1988	1989	1990	1991	1992	1993	1994	1995	1996	1997	1998	1999
Buses	135	84	78	79	72	71	83	82	82	98	118	123	132	152
State Vehicles	1,859	1,878	1,930	1,989	1,996	1,993	1,861	1,859	1,839	1,539	1,441	1,426	1,488	1,592
Agricultural Vehicles	3,612	3,415	3,263	3,220	3,182	3,061	2,972	2,918	2,901	2,891	2,921	2,863	2,867	2,878
Dealers	6,007	6,053	6,235	5,860	5,532	5,200	5,153	5,140	5,206	5,238	5,344	5,422	5,409	5,492
Municipal Vehicles	6,980	6,473	6,881	7,238	7,618	7,899	8,151	8,487	8,853	9,211	6,772	7,090	7,500	5,572
Motorcycles	23,320	21,854	21,168	20,523	19,391	18,432	17,959	18,059	17,932	18,113	18,257	18,858	19,735	21,597
Handicap Plates	0	0	1,216	1,539	1,228	1,208	1,175	1,355	1,212	1,194	1,205	1,199	1,072	1,278
Handicap Placards	0	0	7,042	7,909	8,777	9,480	10,547	11,879	14,074	16,265	18,490	20,513	20,533	22,428
Trailers	48,357	50,920	53,793	56,659	57,943	58,761	59,447	60,883	62,012	63,233	64,414	66,645	68,810	72,464
Trucks	98,225	102,802	108,268	113,219	114,114	113,381	112,998	116,361	119,213	121,348	124,303	126,641	128,135	134,743
Autos	308,560	310,060	315,422	324,612	326,997	328,847	329,649	338,501	344,049	350,104	357,224	365,151	365,964	381,550
TOTAL	497,055	503,539	525,296	542,847	546,850	548,333	549,995	565,524	577,373	589,234	600,489	615,931	621,645	649,746

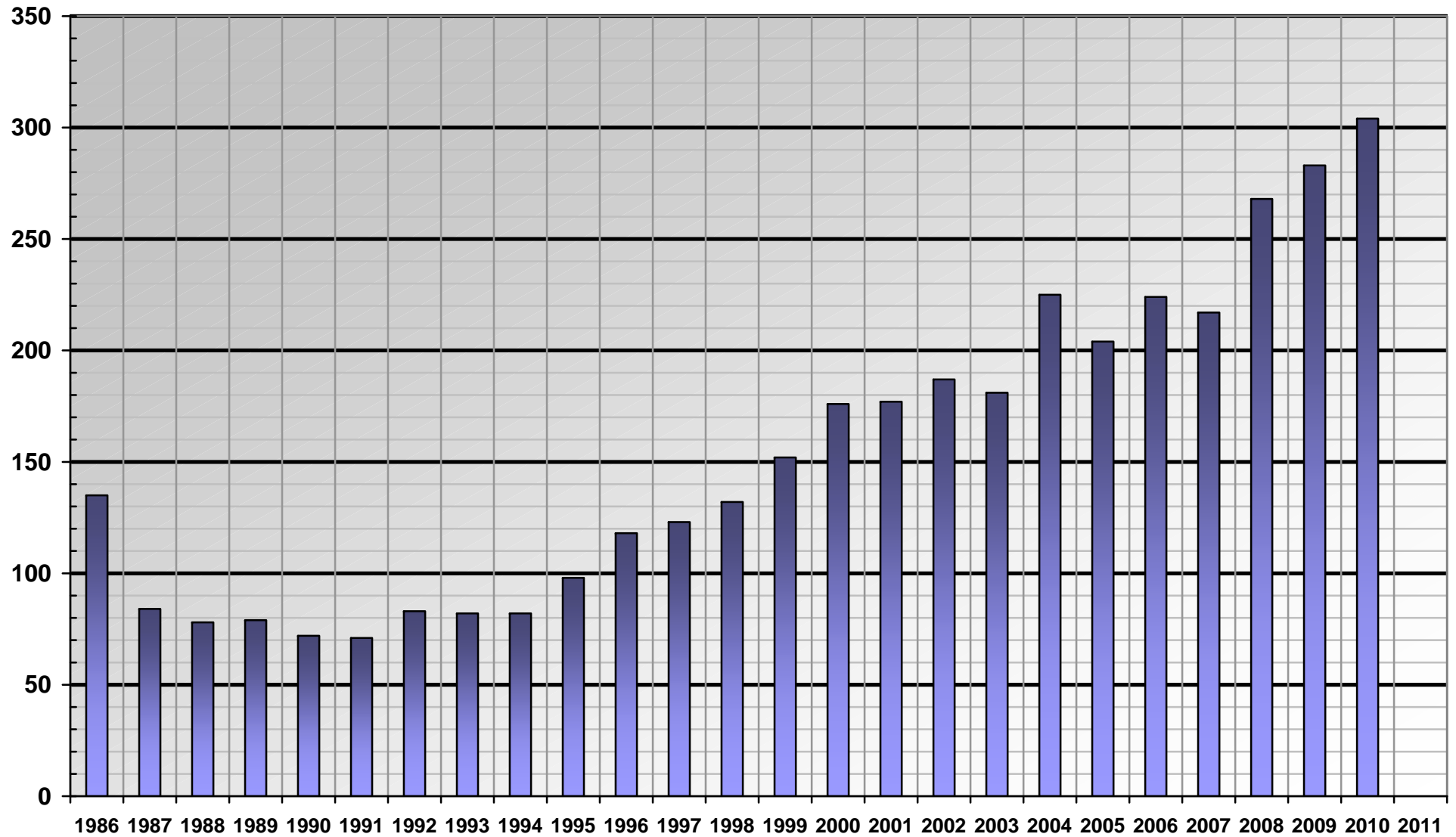
Vehicle Type	2000	2001	2002	2003	2004	2005	2006	2007	2008	2009	2010	2011
Buses	176	177	187	181	225	204	224	217	268	283	304	
State Vehicles	1,686	1,803	1,834	1,810	1,784	1,852	1,997	1,990	2,046	2,031	2,071	
Agricultural Vehicles	2,848	2,869	2,778	2,740	2,787	2,726	2,695	2,696	2,717	2,755	2,819	
Dealers	5,662	5,771	5,823	5,903	5,832	5,816	5,681	5,648	5,411	5,157	4,984	
Municipal Vehicles	6,056	6,567	6,949	7,400	6,544	7,011	7,434	7,596	7,842	7,439	7,707	
Motorcycles	24,201	27,655	31,002	33,005	35,486	38,152	40,617	43,176	44,809	43,582	43,845	
Handicap Plates	1,380	1,497	1,615	1,765	1,819	1,960	2,006	2,054	2,082	2,060	2,163	
Handicap Placards	23,474	25,894	29,340	32,251	34,973	36,026	37,070	37,170	0	0	44,705	
Trailers	76,320	80,143	83,138	85,603	88,498	91,308	92,479	94,057	93,245	92,993	93,211	
Trucks	137,611	140,403	143,004	146,604	149,788	152,365	152,941	152,861	149,920	147,545	146,303	
Autos	388,773	395,030	400,107	406,845	410,193	412,242	412,791	411,923	409,920	409,393	411,373	
TOTAL	668,187	687,809	705,777	724,107	737,929	749,662	755,935	759,388	718,260	713,238	759,485	



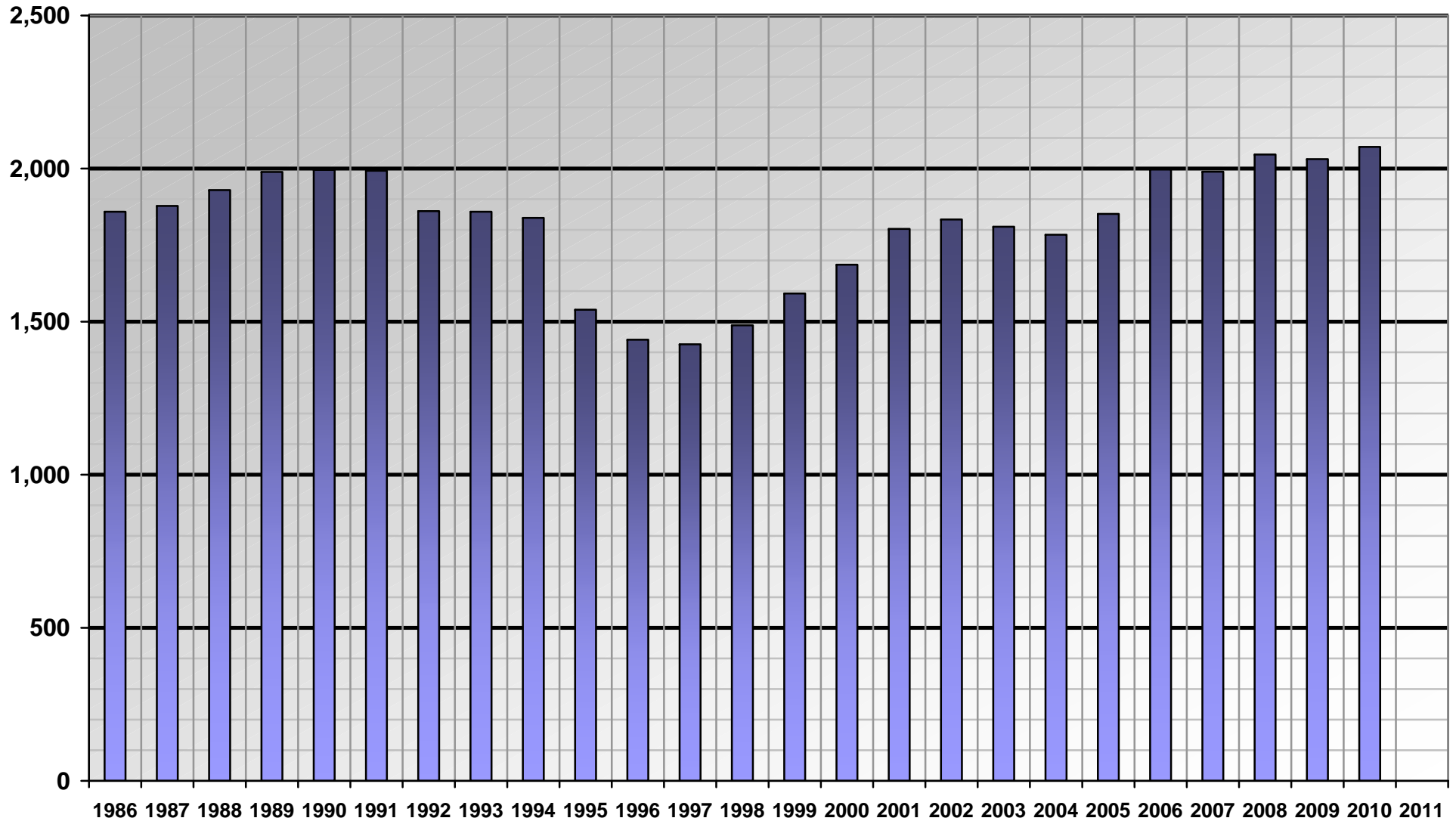
TOTAL REGISTRATIONS ISSUED



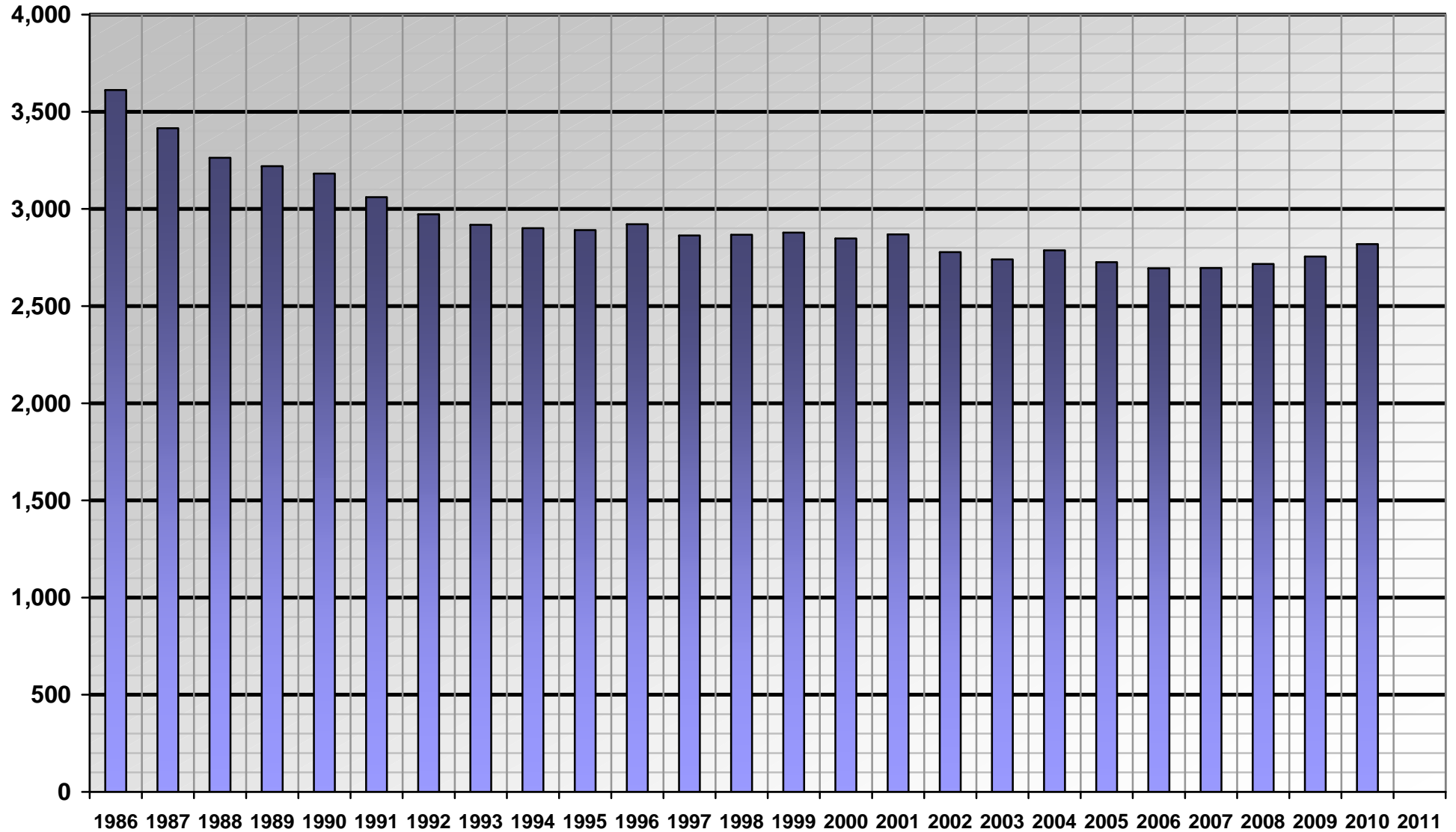
Bus Registrations Issued



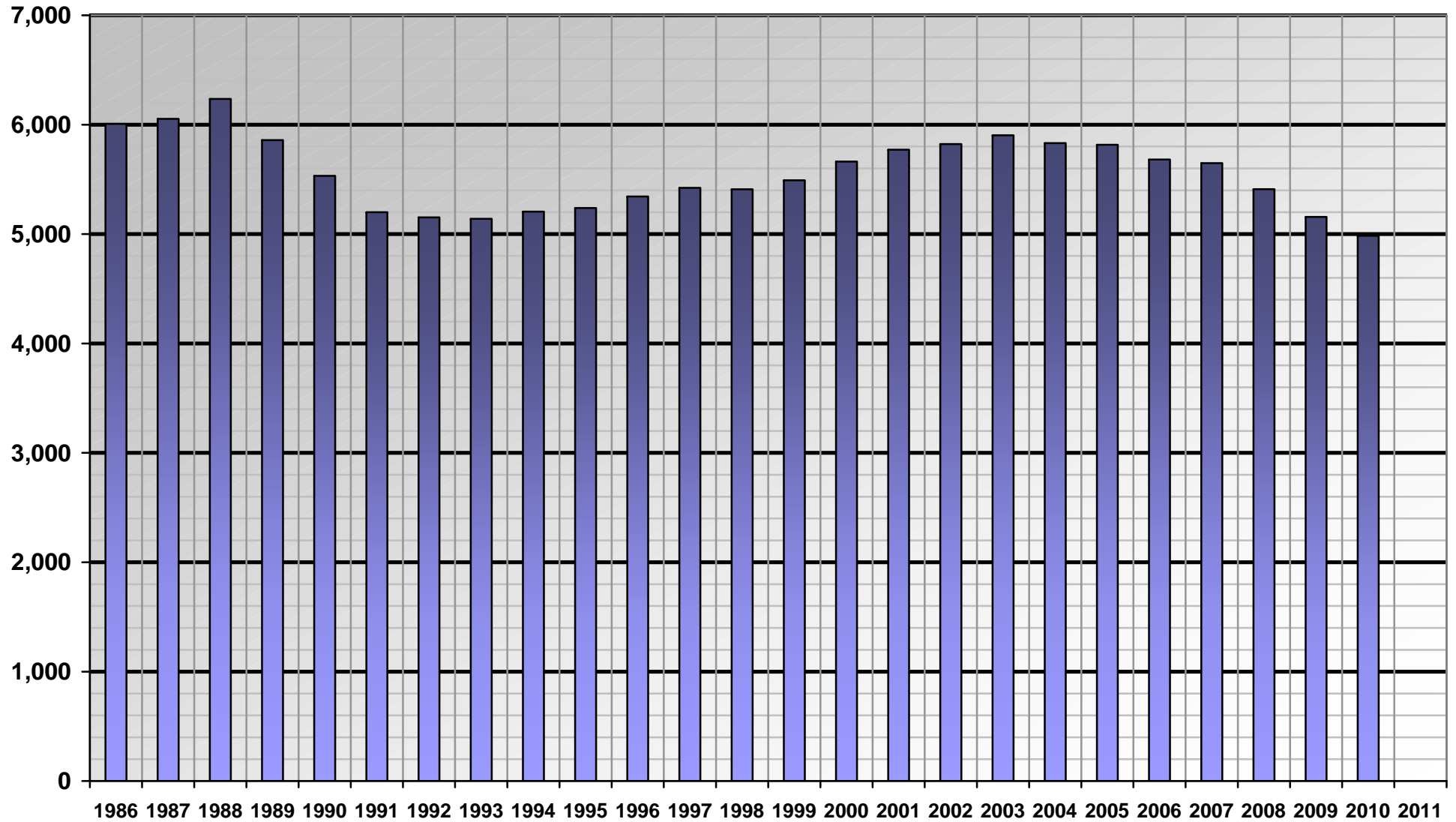
State Vehicles Registered



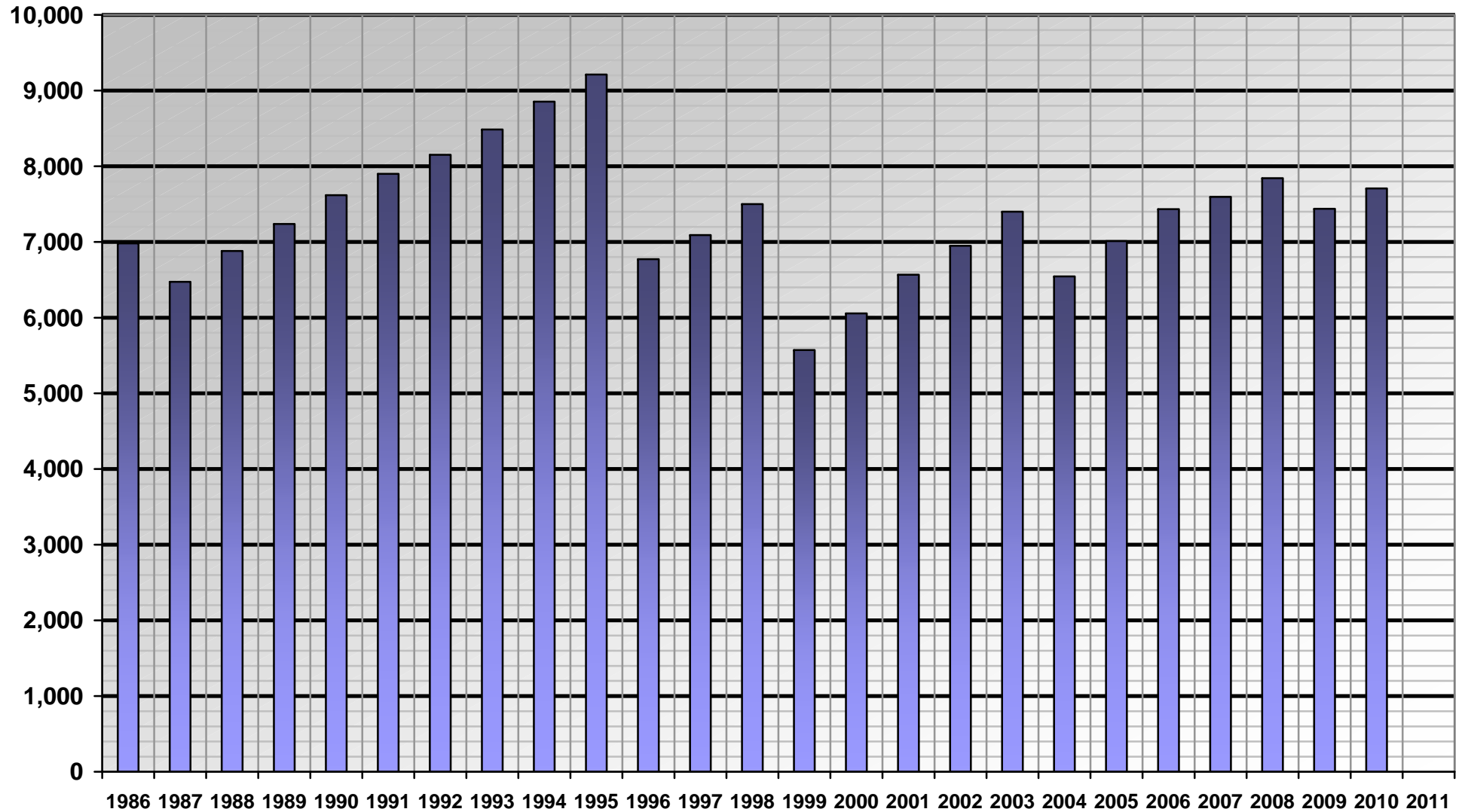
Agricultural Vehicles Registered



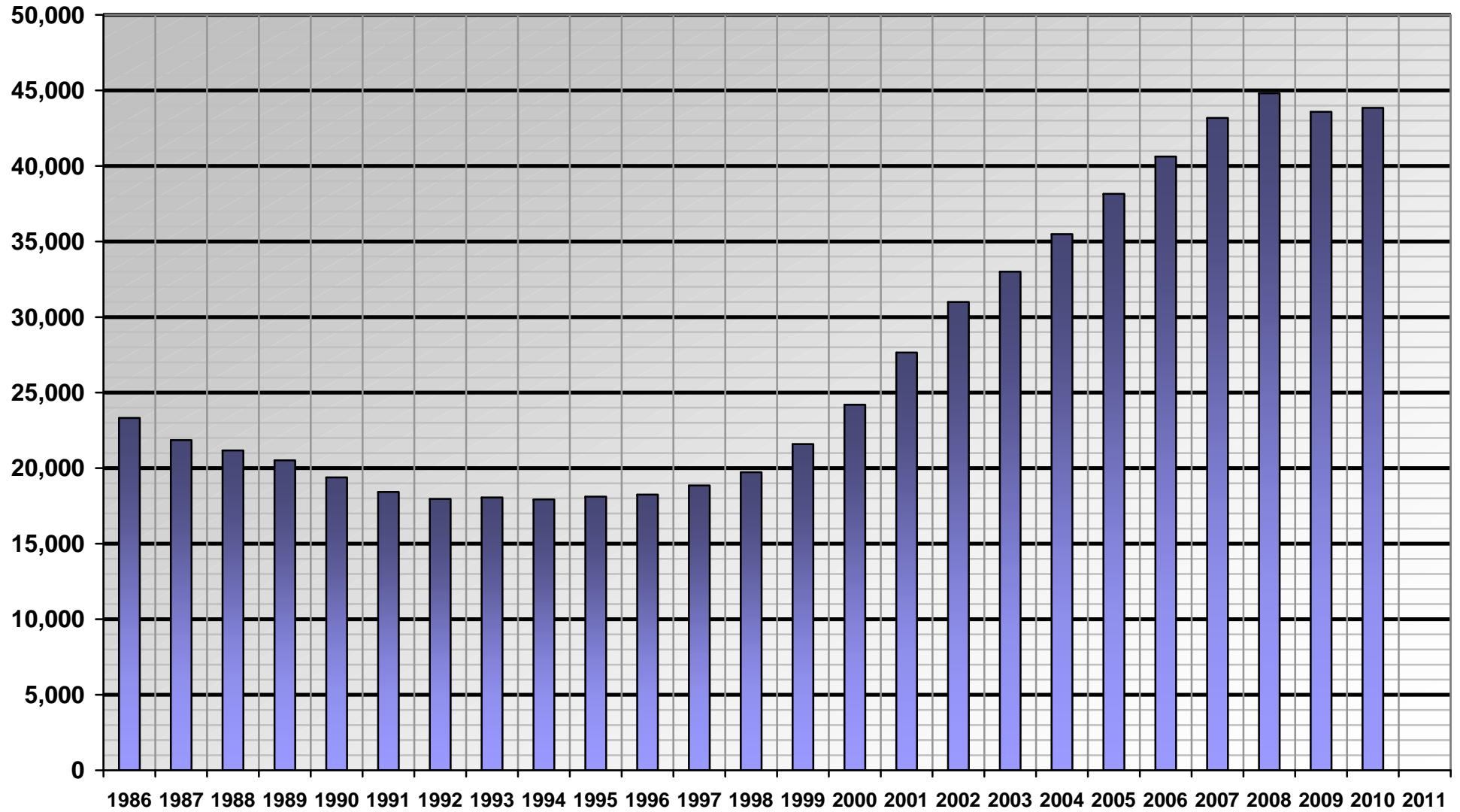
Dealer Registrations Issued



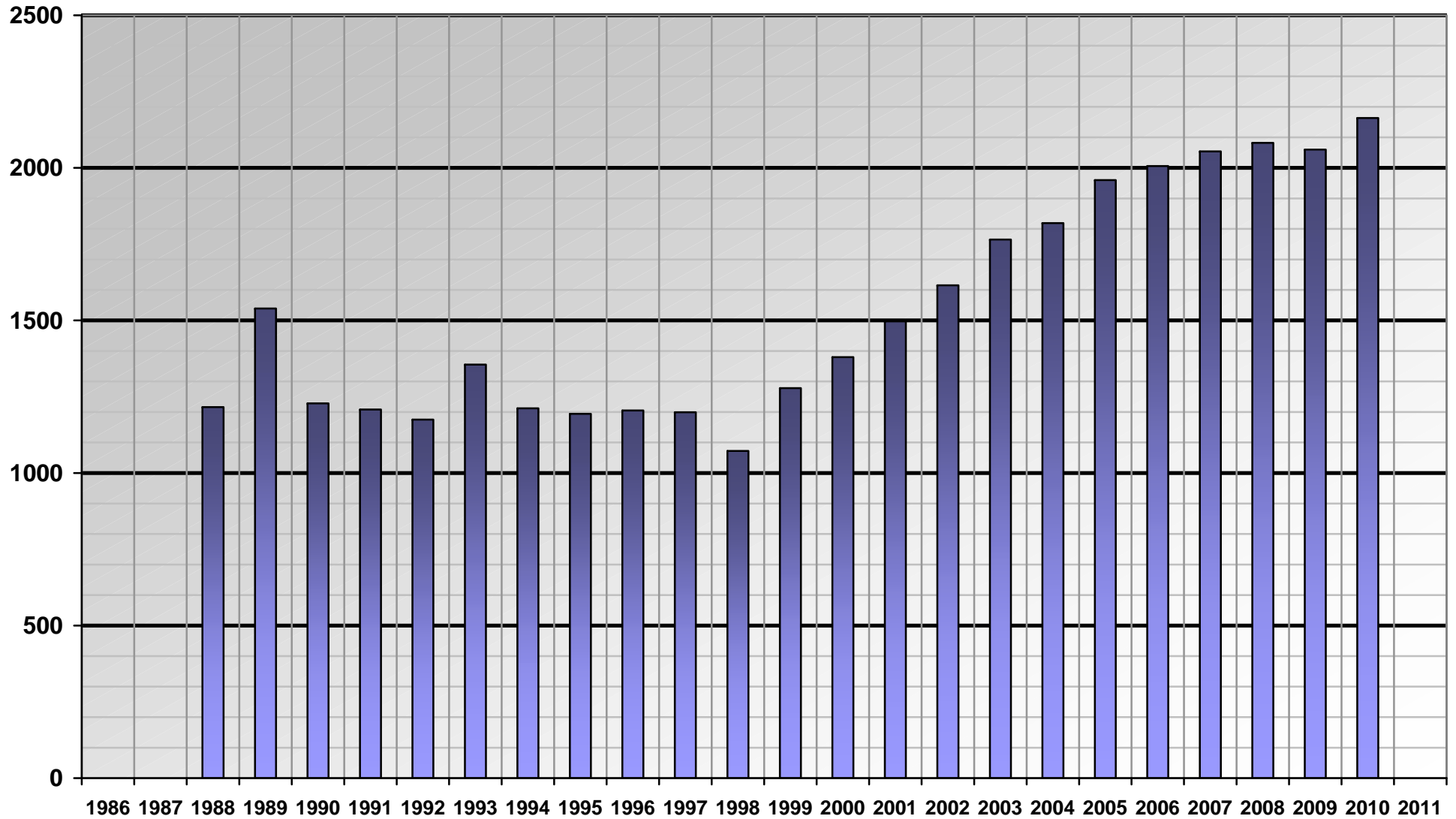
Municipal Vehicles Registered



Motorcycle Registrations Issued

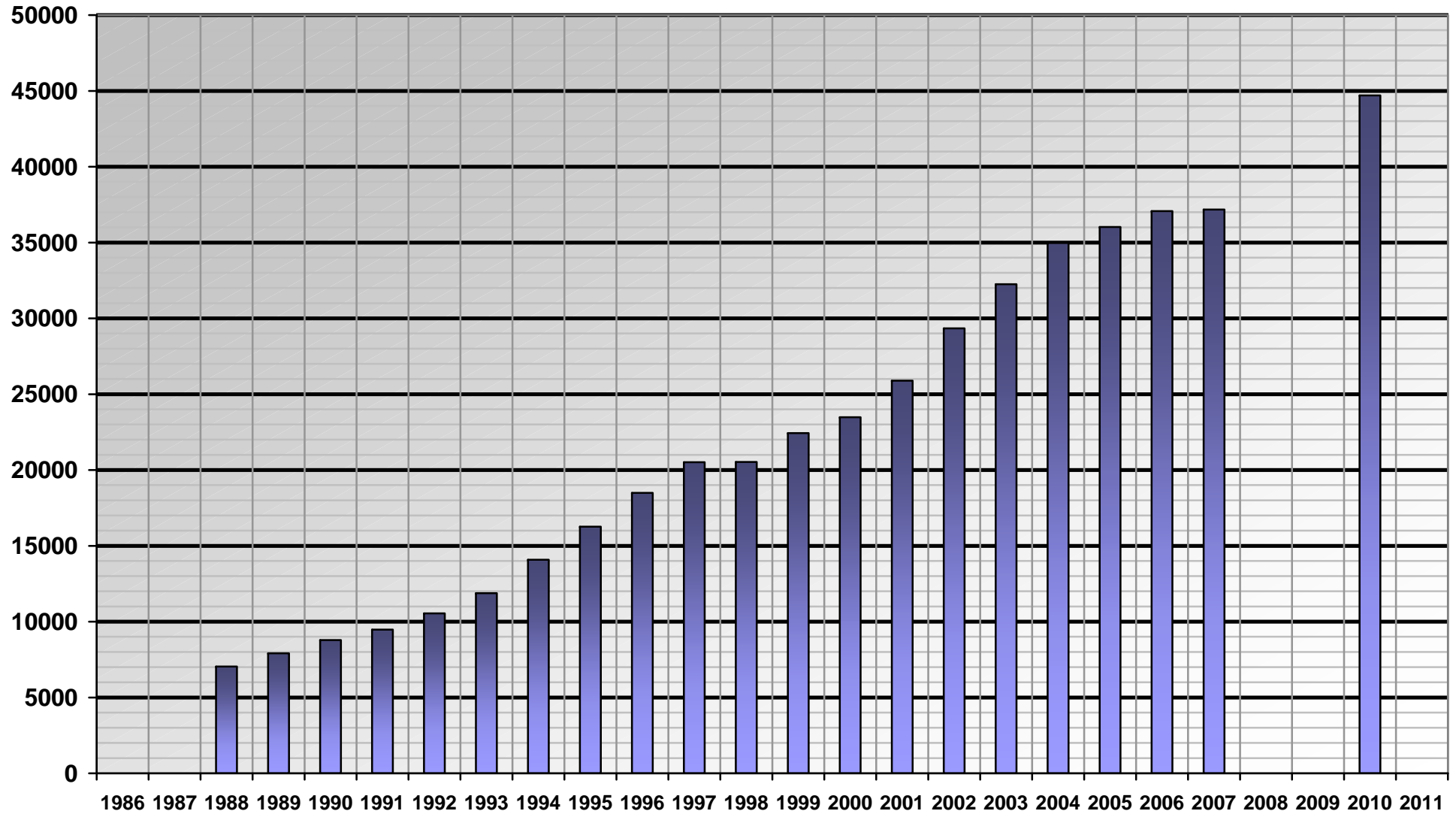


Handicap Plates Issued

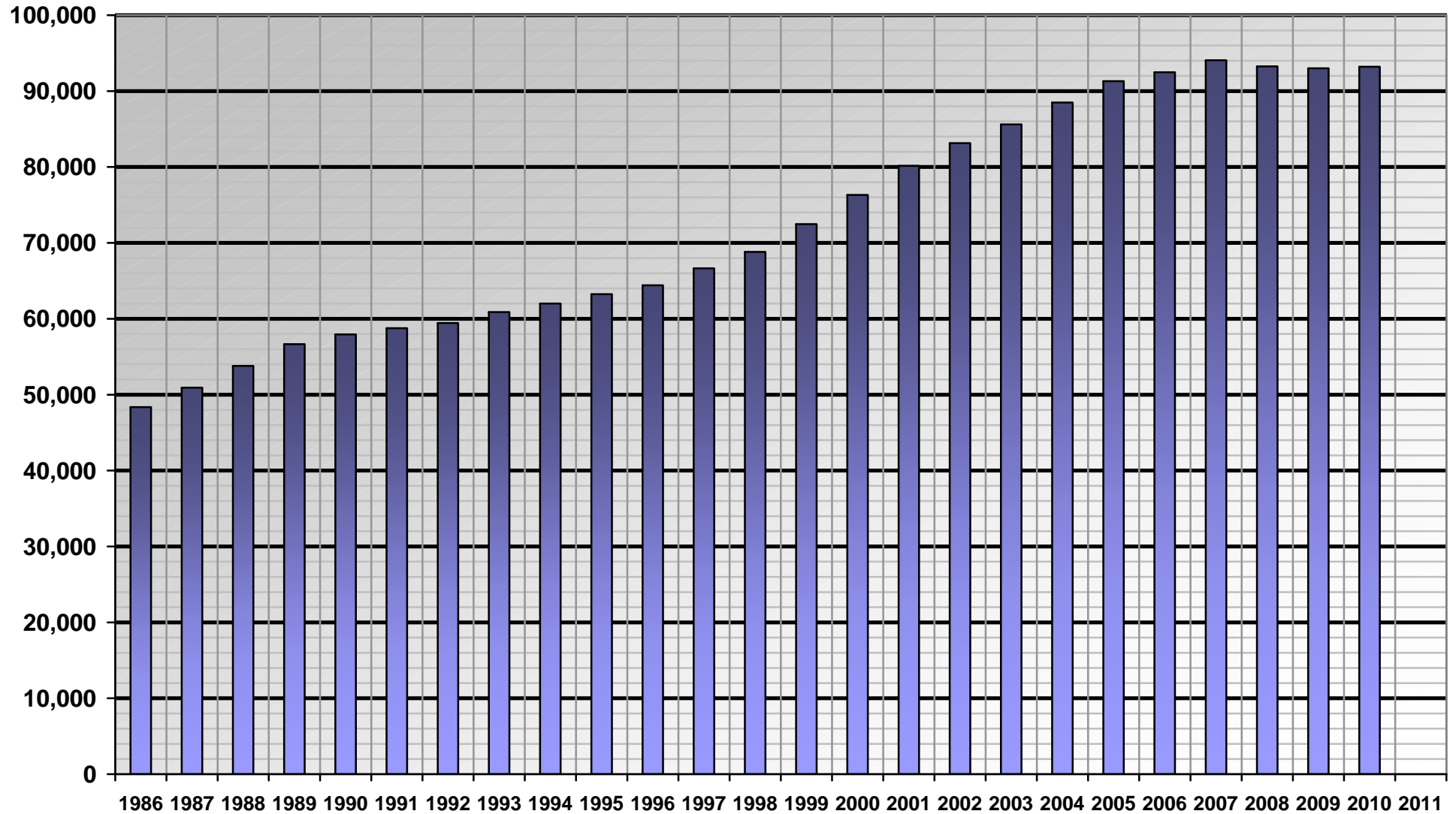




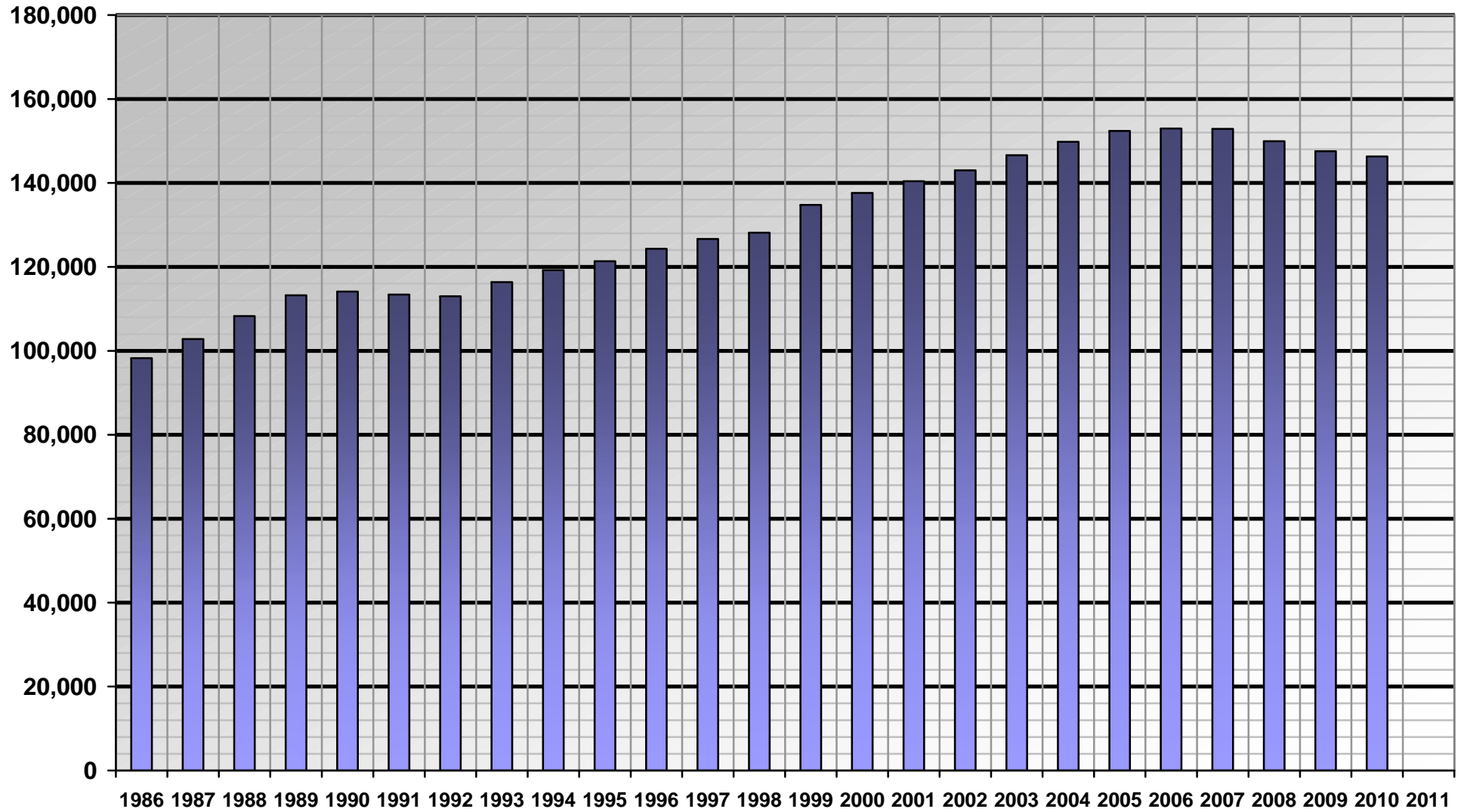
Handicap Placards Issued



Trailer Registrations Issued



Truck Registrations Issued





Auto (Car) Registrations

