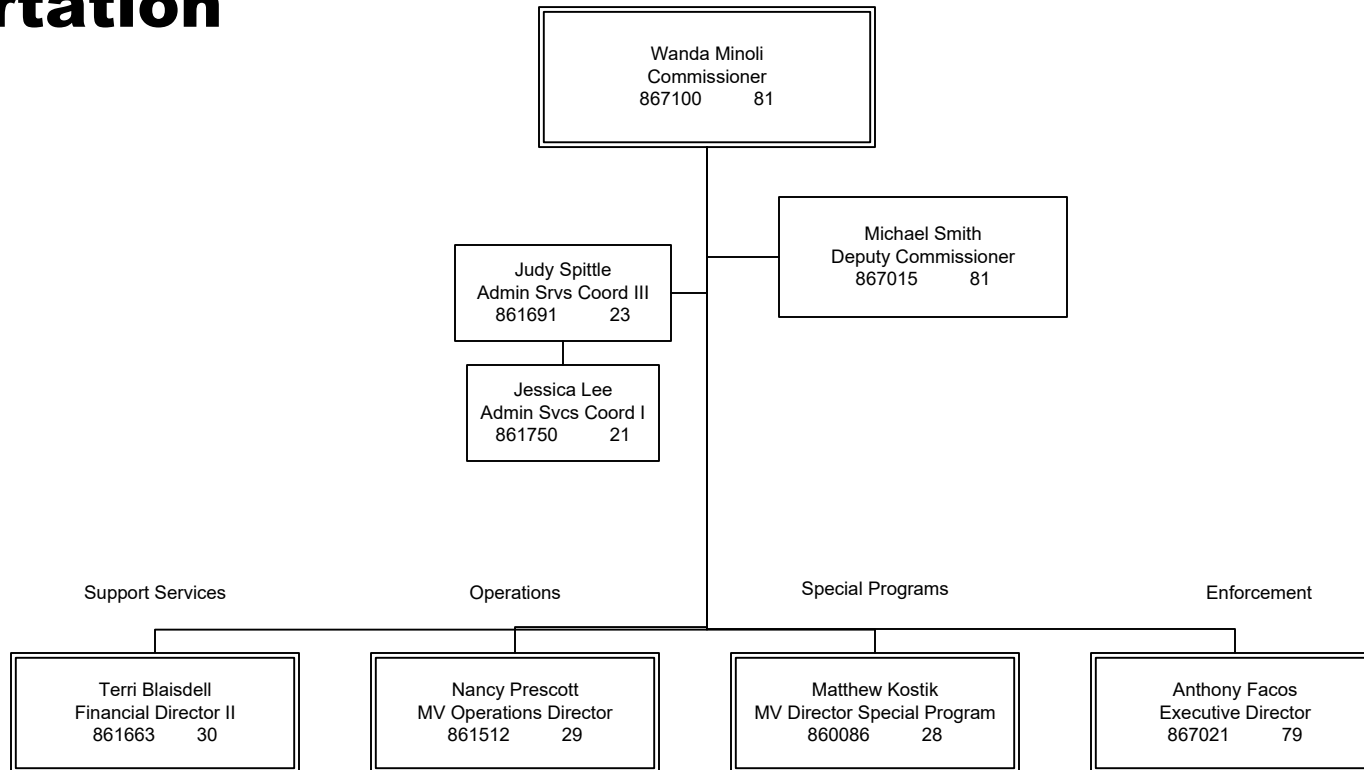




Agency of Transportation

Department of Motor Vehicles

Commissioner

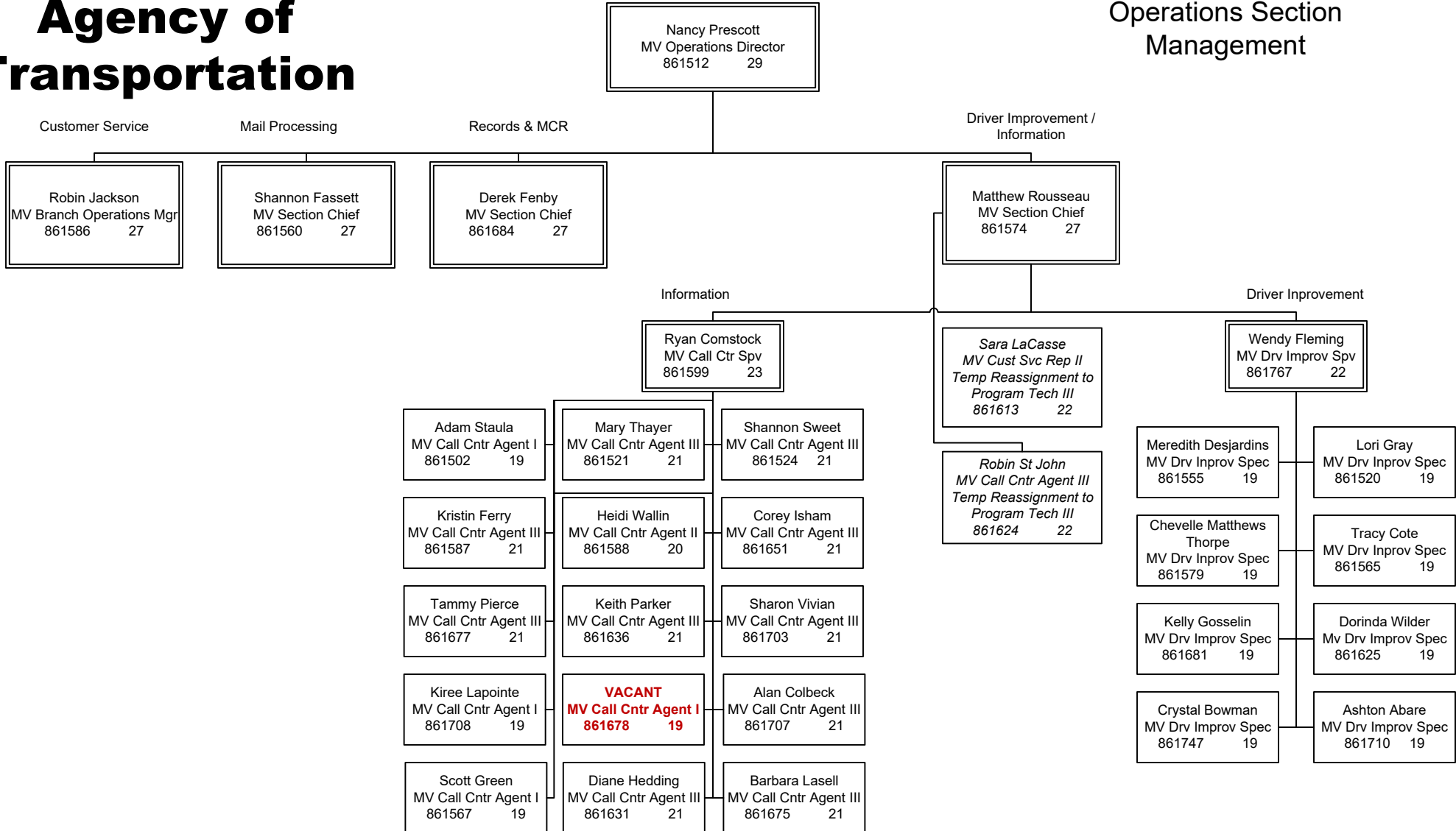


FY22

09 09 2021

Agency of Transportation

Operations Section Management

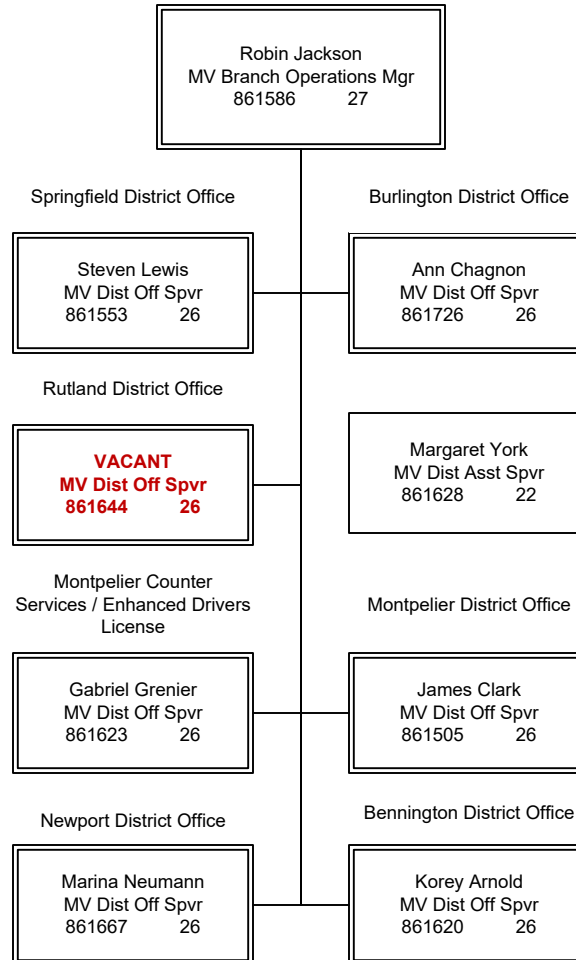




Agency of Transportation

Department of Motor Vehicles

Operations Section Customer Services Units



FY22

09 09 2021



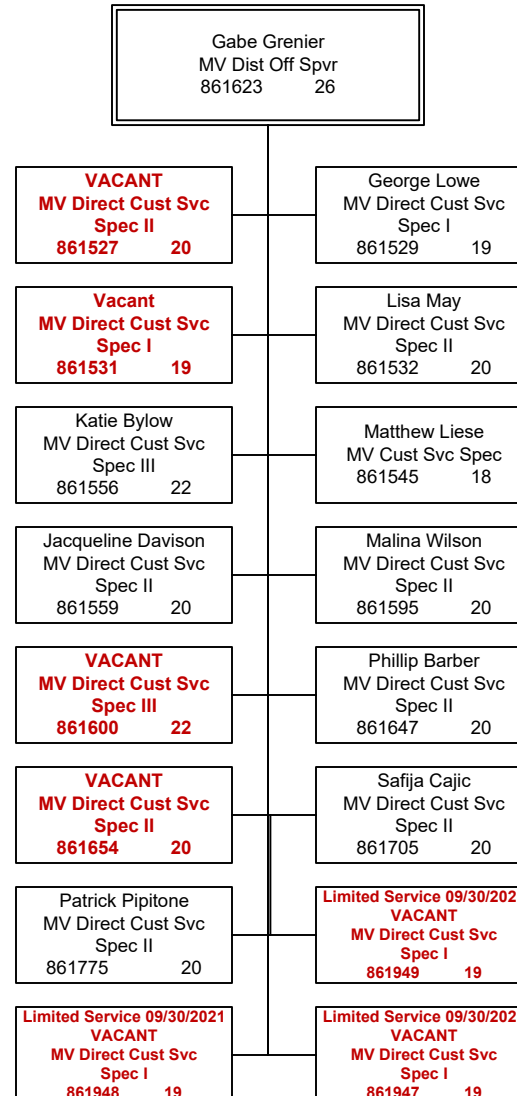
Agency of Transportation

Department of Motor Vehicles

Operations Section
Customer Services Units

Montpelier Office

Counter Services /
Enhanced Drivers License



FY22

09 09 2021



Agency of Transportation

Department of Motor Vehicles Operations Section Customer Services Units Branch Offices

Springfield District Office

Stephan Lewis MV Dist Off Spvr 861553 26
Douglas Keleher MV Exam II 861511 20
Kevin Vancor MV Direct Cust Svc Spec II 861546 20
Luann Jenkins MV Direct Cust Svc Spec II 861596 20
Michelle Rumrill MV Direct Cust Svc Spec III 861629 22
Marissa Stack MV Direct Cust Svc Spec II 861731 20

Bennington District Office

Korey Arnold MV Dist Off Spvr 861620 26
Nicholas Nahodil MV Exam II 861509 20
Mariah Diotte MV Direct Cust Svc Spec I 861557 19
Sara Smith MV Direct Cust Svc Spec I 861732 20
Mary Hickey MV Direct Cust Svc Spec II 861744 20

So. Burlington District Office

Margaret York MV Dist Asst Spvr 861628 22	Anne Chagnon MV Dist Off Spvr 861726 26
Justin McLane MV Exam II 861590 20	Loren James MV Exam II 861698 20
Vicki Good MV Direct Cust Svc Spec II 860110 20	Melissa Wood MV Direct Cust Svc Spec II 861507 20
Karen Keelty MV Direct Cust Svc Spec II 861517 20	Paul Chun MV Direct Cust Svc Spec III 861523 20
Autumn Nobel MV Direct Cust Svc Spec II 861536 20	Patricia Goyet MV Direct Cust Svc Spec II 861581 20
April Barratt MV Direct Cust Svc Spec II 861609 20	Rohan St. Marthe MV Direct Cust Svc Spec I 861612 19
Mark Roberts MV Direct Cust Svc Spec I 861621 19	Nicholas Reuter MV Direct Cust Svc Spec I 861689 19
Raymond Jablonski MV Direct Cust Svc Spec I 861701 19	Kristie Martell MV Direct Cust Svc Spec I 861712 19
Cynthia Preston MV Direct Cust Svc Spec II 861714 20	Diana Woodruff MV Direct Cust Svc Spec I 861768 19
Tucker Krause MV Direct Cust Svc Spec I 861771 19	Maryeugenia St Peter MV Direct Cust Svc Spec I 861777 19

Rutland District Office

VACANT MV Dist Off Spvr 861644 26	
Southern Mobile Unit	Rutland
Donna Thomson MV MU Coord 861766 22	Hannah Whittemore MV Exam II 861697 20
Deborah Sheldon MV MU Client Sup Spec. 861763 20	Kaitlin Keefe MV Direct Cust Svc Spec II 861522 20
Tami Walker MV MU Client Sup Spec. 861764 20	Andrew Baccei MV Direct Cust Svc Spec II 861528 20
Gretchen Monez MV MU Client Sup Spec.861765 20	Kara Eaton MV Direct Cust Svc Spec III 861564 22
	Rachel Brzoza MV Direct Cust Svc Spec II 861568 20
	Joseph Caliguiri MV Direct Cust Svc Spec II 861575 20
	Malia Baker MV Direct Cust Svc Spec II 861674 20

Montpelier District Office

James Clark MV Dist Off Spvr 861505 26	
Richard Scholfield MV Exam II 861571 20	
Northern Mobile Unit	
William Larkham MV MU Coord 861592 22	
Amy Deforge MV MU Client Sup Spec. 860068 20	
Lisa Fletcher MV MU Client Sup Spec. 861566 20	
Terry Wendelken MV MU Client Sup Spec. 861709 20	
Pamela Scully MV MU Client Sup Spec. 861715 20	

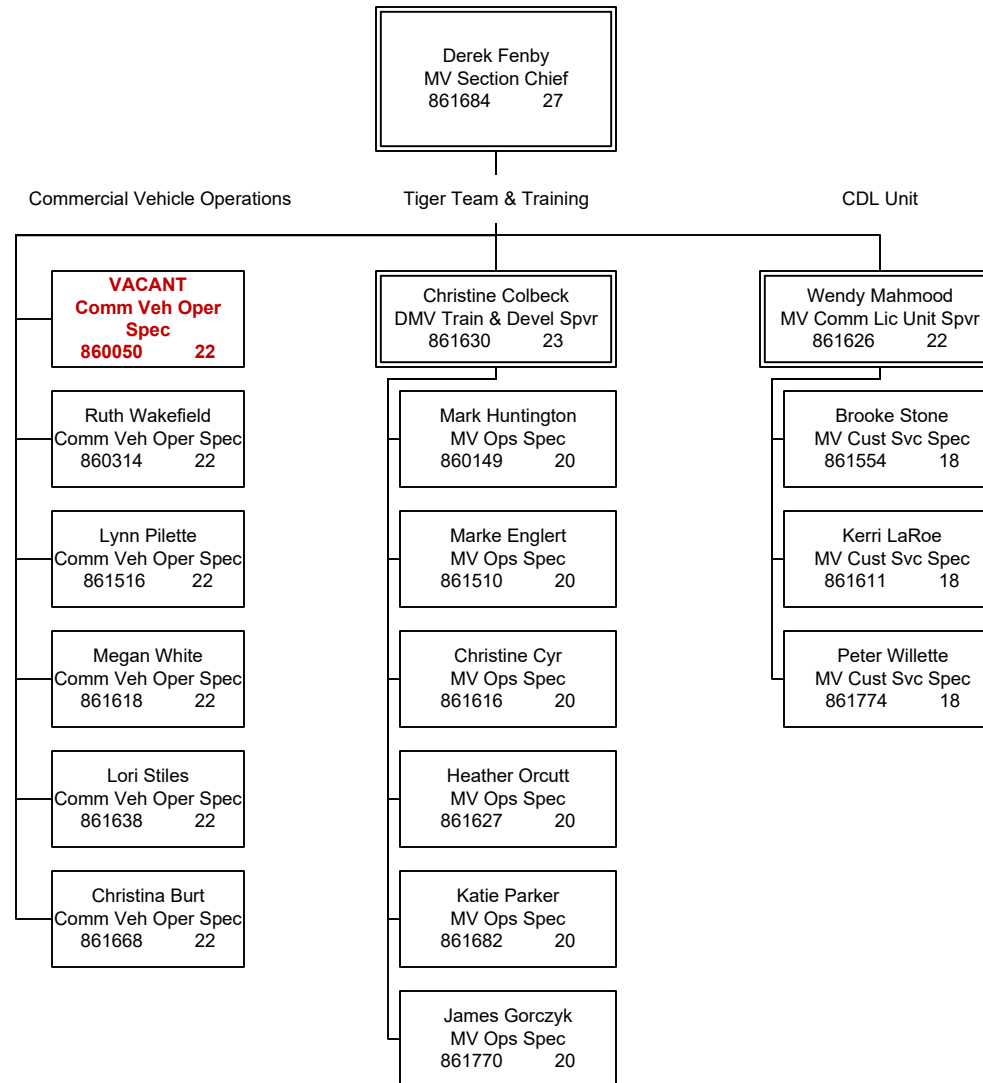
Newport District Office

Marina Neumann MV Dist Off Spvr 861667 26
Sean Quinn MV Exam II 861591 20
Ali Thurston MV Direct Cust Svc Spec I 861503 19
Candy Mayhew MV Direct Cust Svc Spec II 861662 20
Lisa Barbeau MV Direct Cust Svc Spec I 861743 19



FY22

09 09 2021

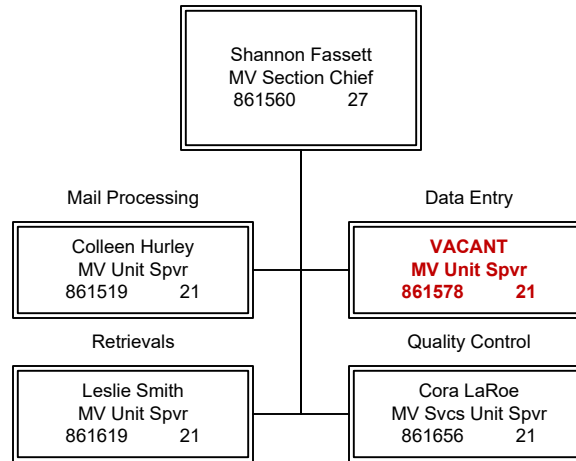




Agency of Transportation

Department of Motor Vehicles

Operations Section
Mail Processing Units



FY22

09 09 2021

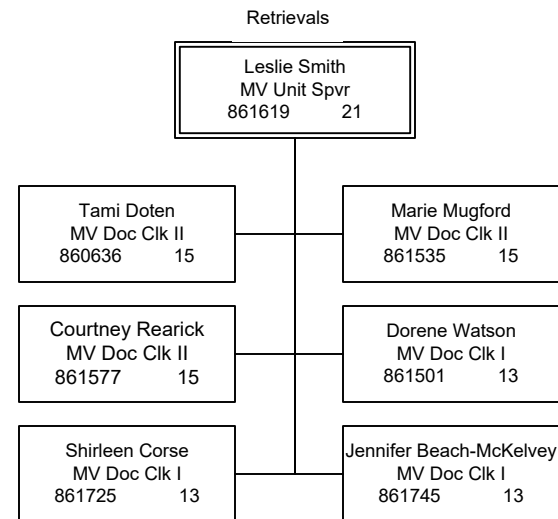
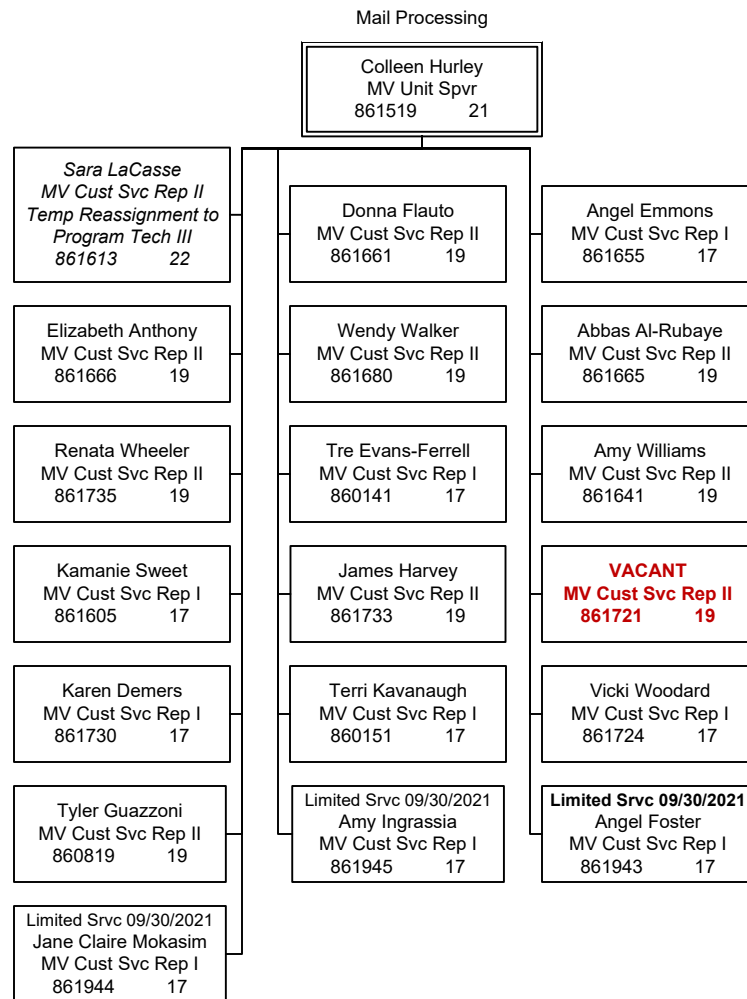


Agency of Transportation

Department of Motor Vehicles

Operations Section Mail Processing

Mail Processing & Retrievals



FY22

09 09 2021

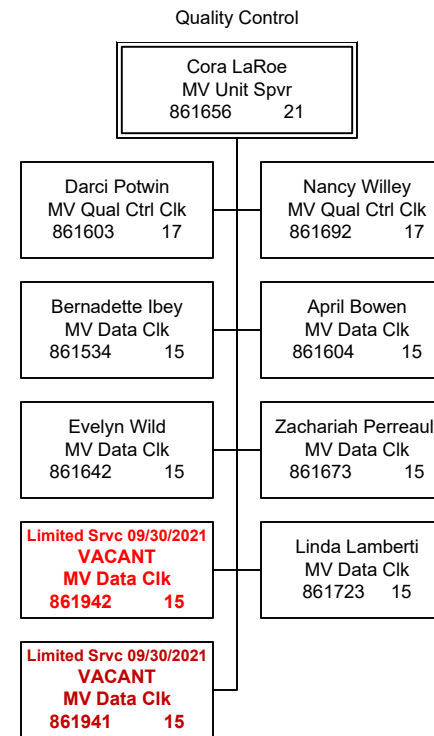
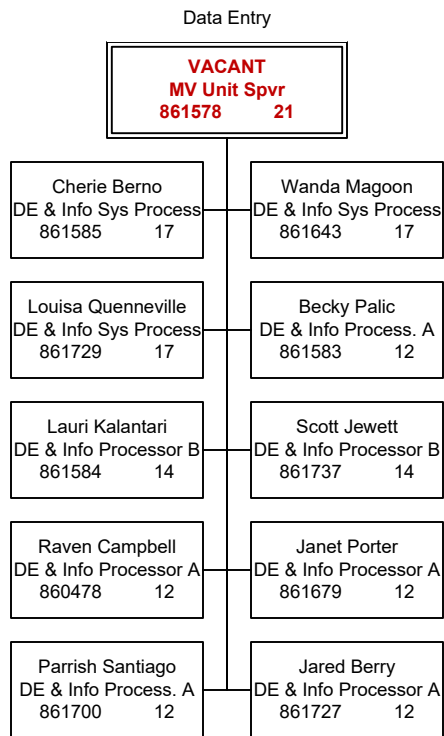


Agency of Transportation

Department of Motor Vehicles

Operations Section Mail Processing

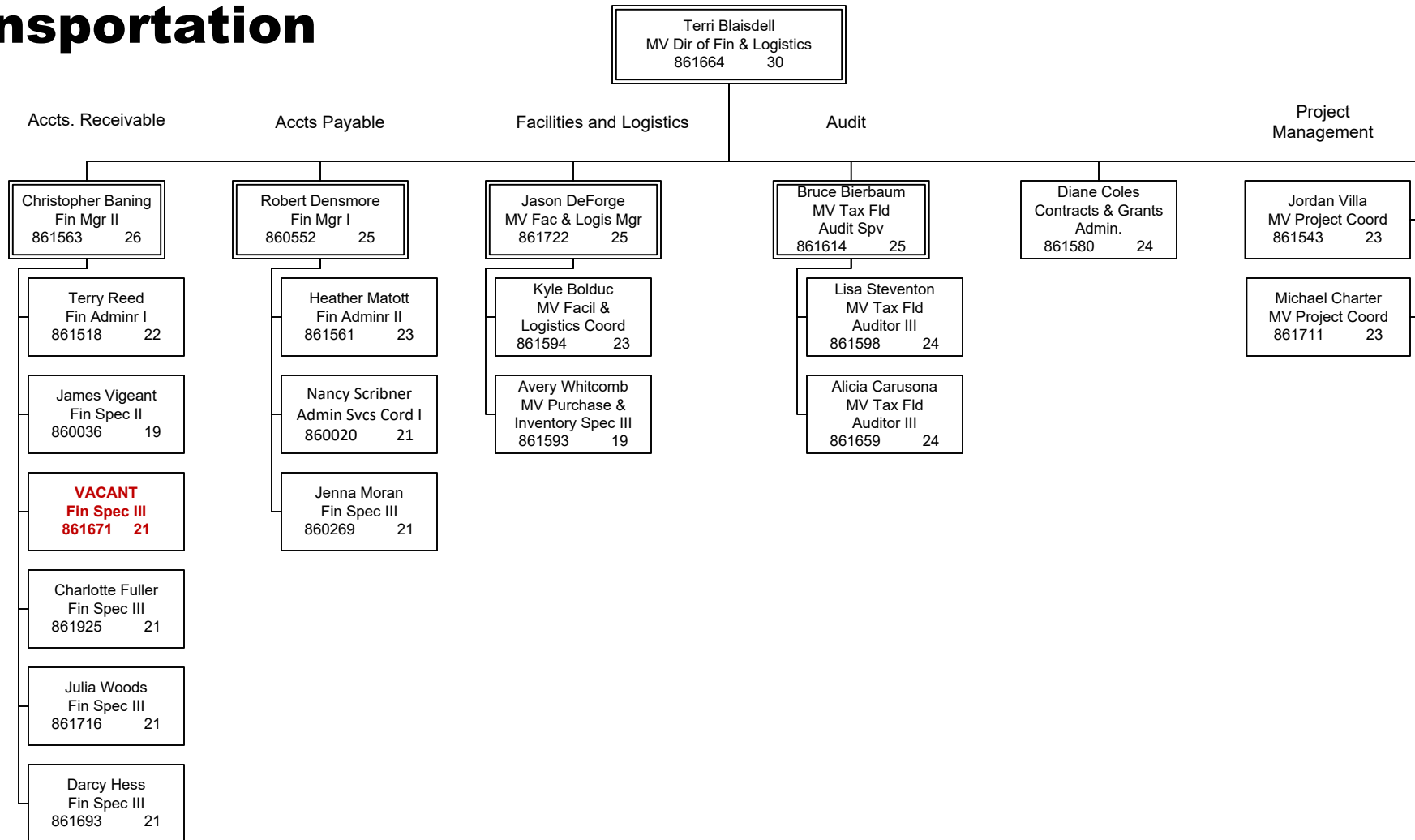
Data Entry & Quality Control



FY22

09 09 2021

Agency of Transportation



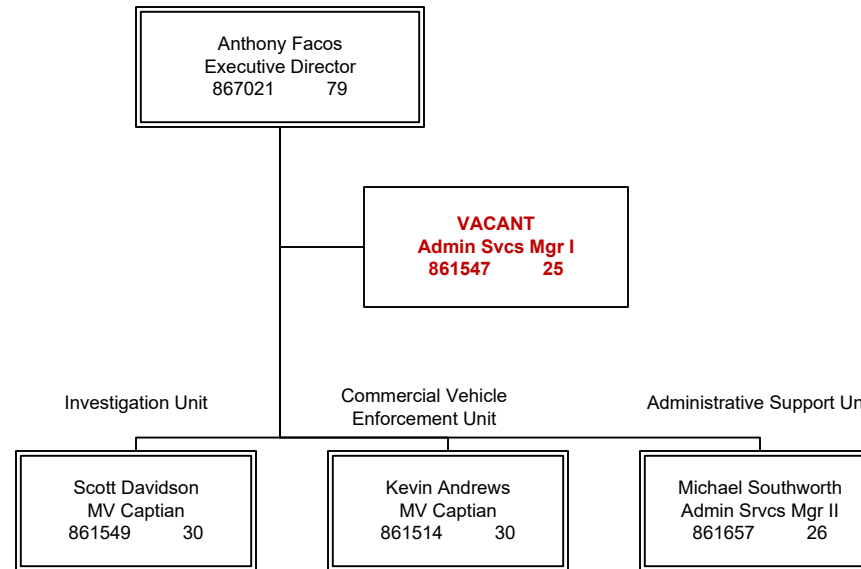


Agency of Transportation

Department of Motor Vehicles

Motor Vehicle
Enforcement & Safety

Office of the Director



FY22

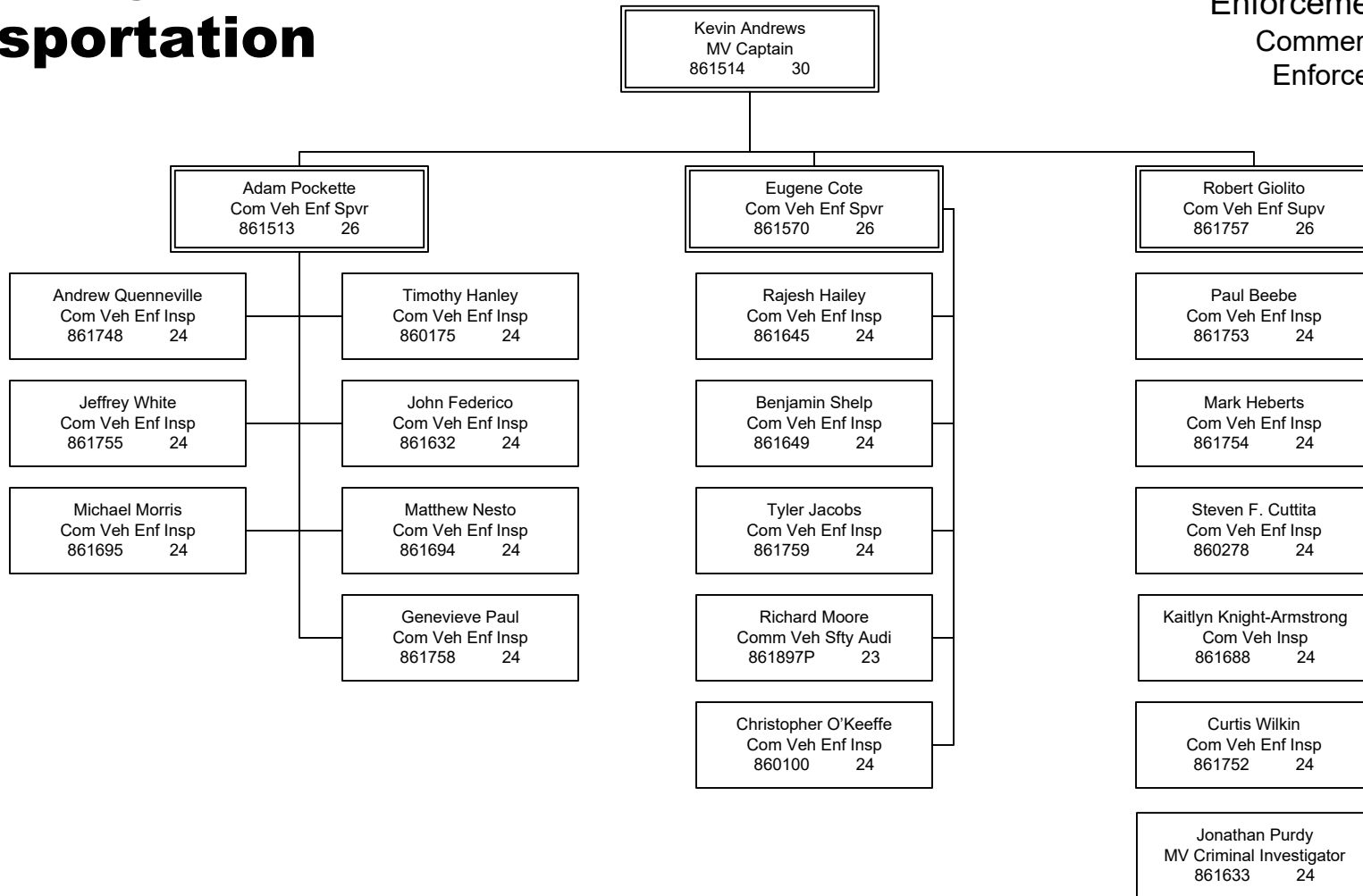
09 09 2021



Agency of Transportation

Department of Motor Vehicles

Motor Vehicle Enforcement & Safety Commercial Vehicle Enforcement Unit



FY22

09 09 2021

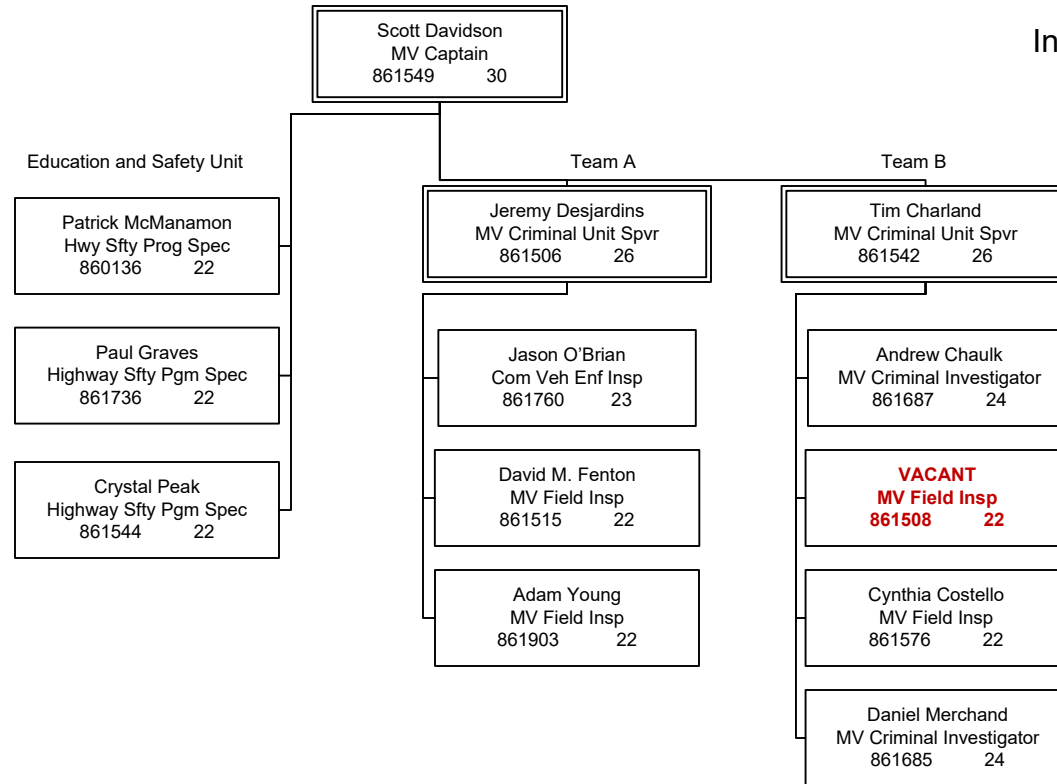


Agency of Transportation

Department of Motor Vehicles

Motor Vehicle Enforcement & Safety

Investigation Unit



FY22

09 09 2021

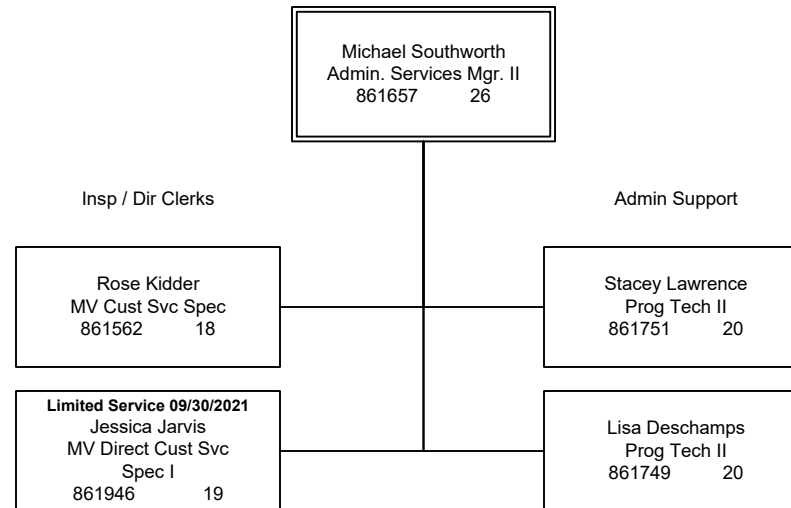


Agency of Transportation

Department of Motor Vehicles

Motor Vehicle Enforcement & Safety

Administrative Support Unit



FY22

09 09 2021