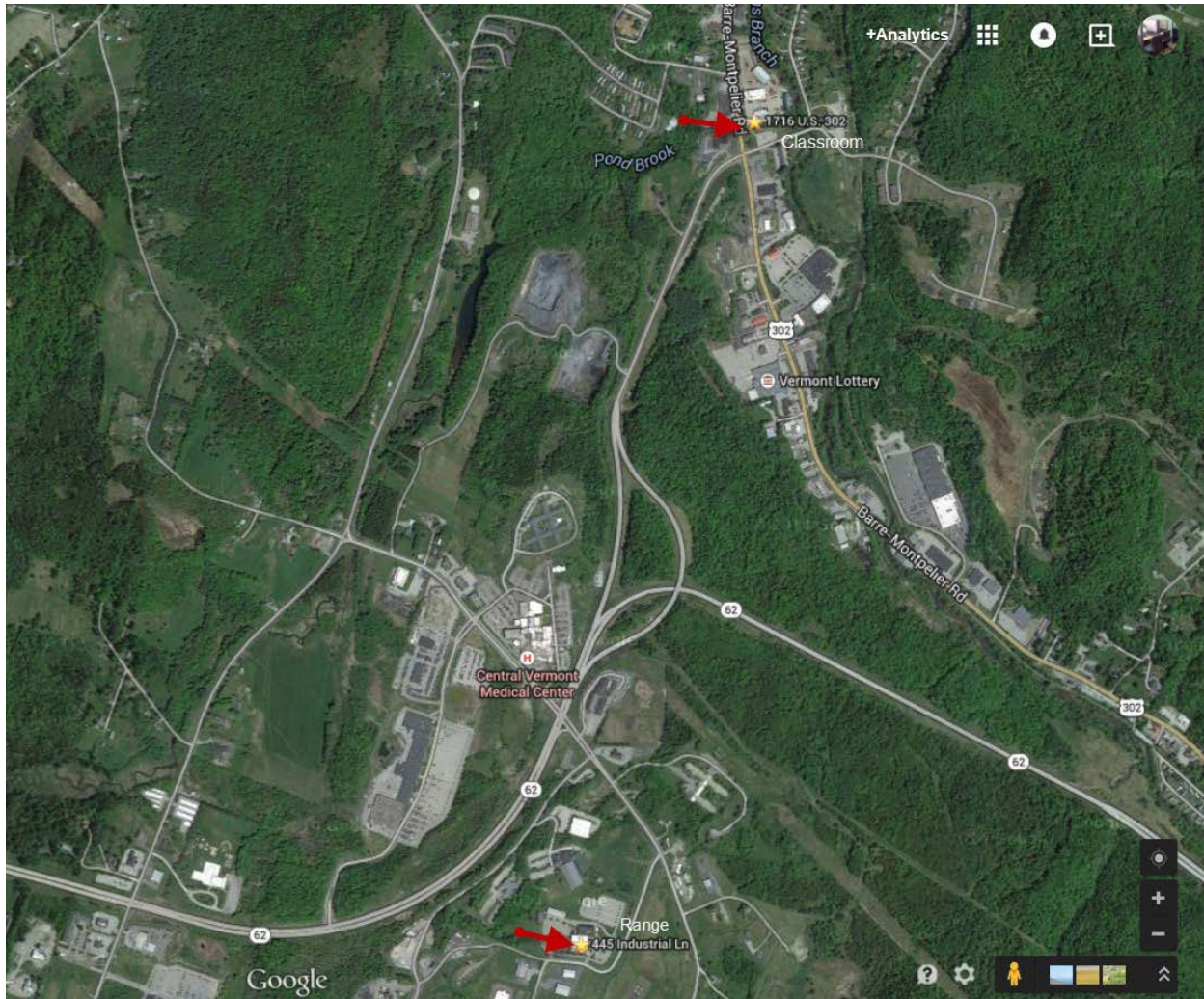




## DIRECTIONS TO THE VERMONT RIDER EDUCATION PROGRAM'S TRAINING SITES

### BERLIN



**Range (riding) activities are conducted at BlueCross BlueShield of Vermont.**

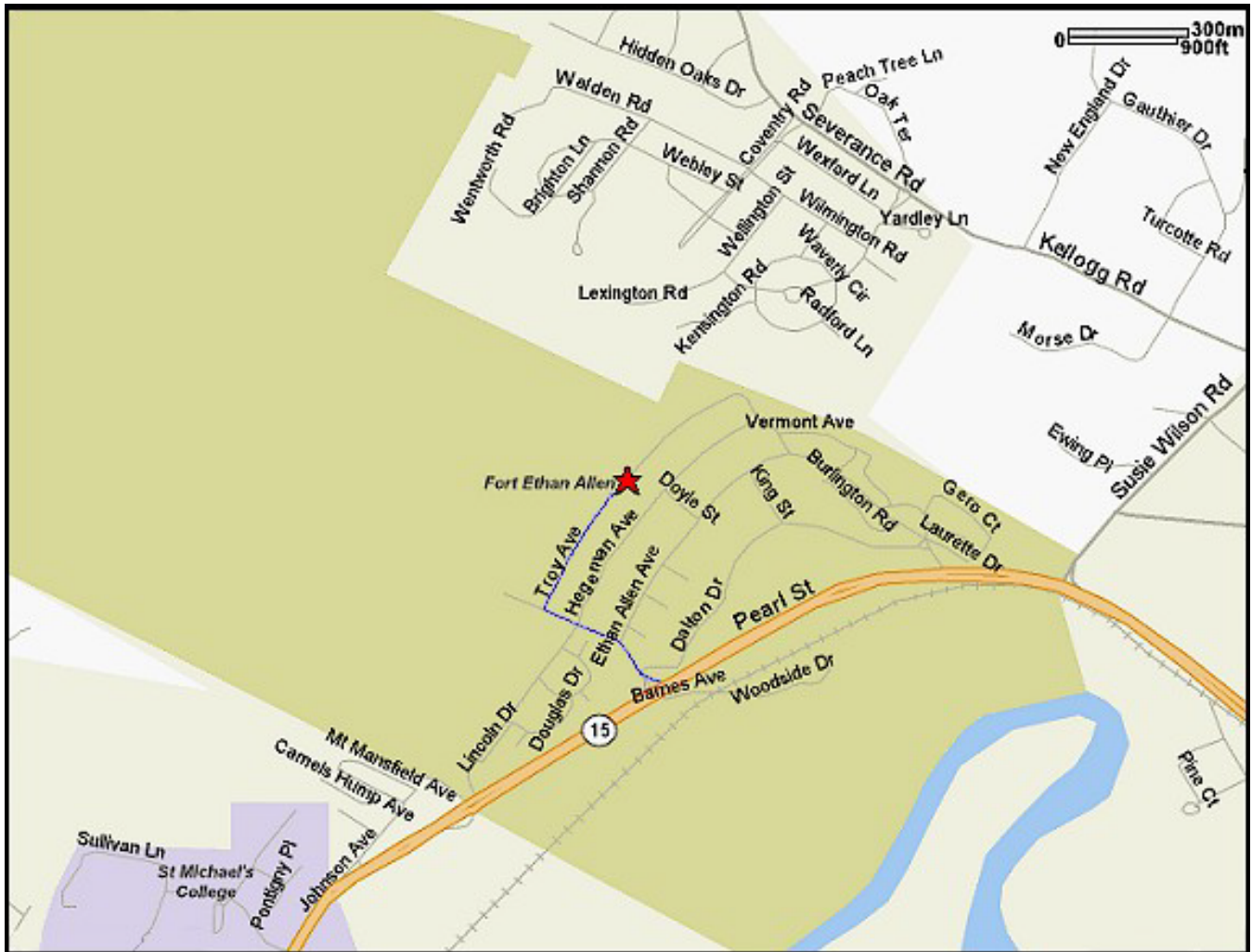
**From I-89:** Take exit 7; follow Route 62 East.

**To Range:** turn right at the third traffic light onto Airport Road. Proceed 0.3 miles and turn right on Industrial Lane. BlueCross BlueShield is located on the right at the top of the hill.



## DIRECTIONS TO THE VERMONT RIDER EDUCATION PROGRAM'S TRAINING SITES

### COLCHESTER



**From the South:** I-89 North, Exit 15; right on the exit ramp onto Route 15 East. Travel past Fanny Allen Hospital on the right. Turn left onto Barnes Ave. (left turn lane at light). Stay on Barnes Ave until you reach Troy Avenue, and turn right on Troy Avenue. The gate to enter the facility will be on your left.

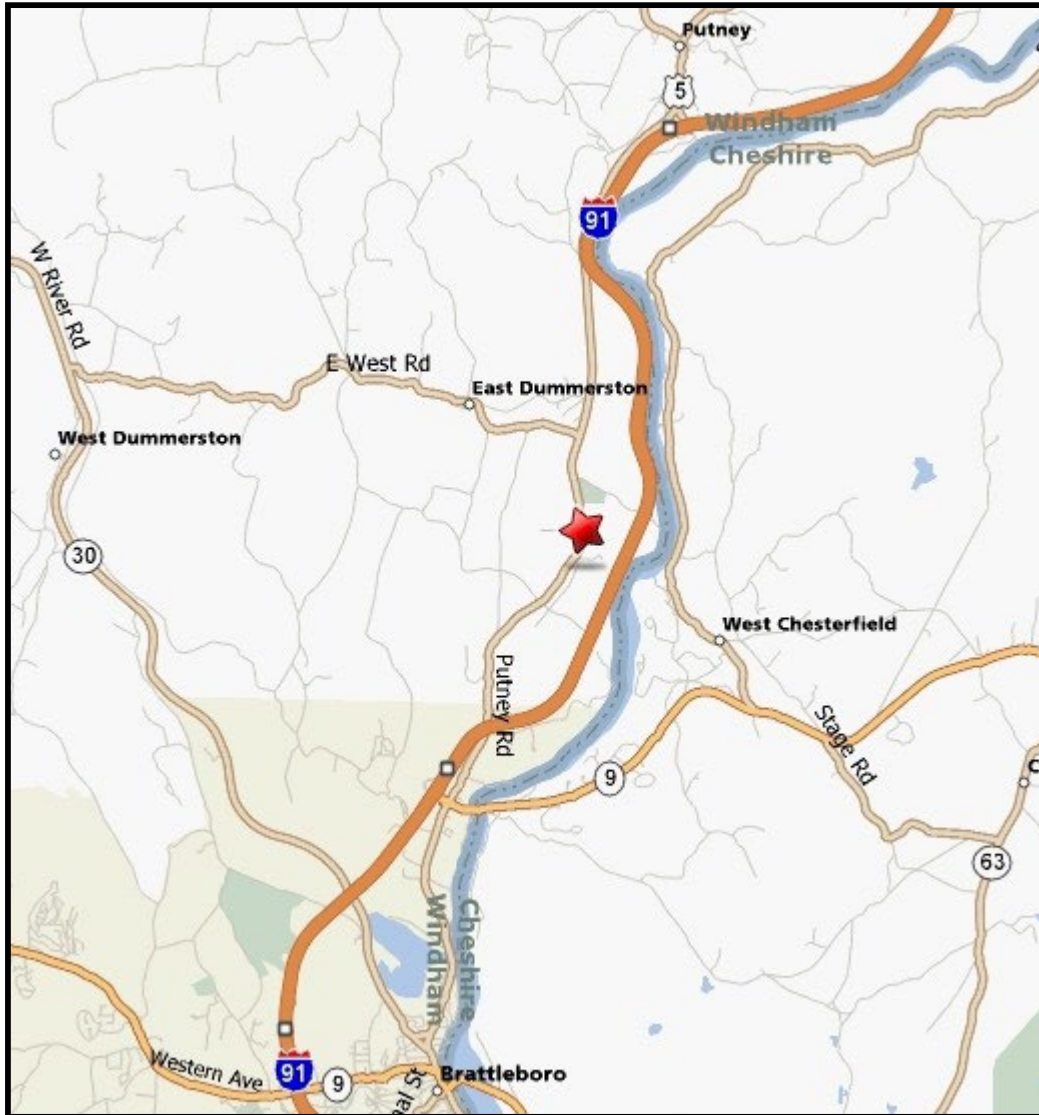
**From the North:** I-89 South, Exit 16, turn right off the exit onto Routes 2 and 7, and go down the hill through 3 sets of lights; the 4th set is the intersection of Route 15. Turn left onto Route 15 East. Travel past Fanny Allen Hospital on the right. Turn left onto Barnes Ave. (left turn lane at light). Stay on Barnes Ave until you reach Troy Avenue, and turn right on Troy Avenue. The gate to enter the facility will be on your left.

**From the Five Corners in Essex Jct.:** Take Route 15 West. After passing the park on the right, turn right onto Barnes Ave. Stay on Barnes Ave until you get to Troy Avenue, and turn right on Troy Avenue. The gate to enter the facility will be on your left.

### DUMMERSTON



## DIRECTIONS TO THE VERMONT RIDER EDUCATION PROGRAM'S TRAINING SITES



**From South:** Take I-91 North to Exit 3; at the roundabout, take the 3rd exit onto US-5 North; continue on Route 5 North for approximately 2.7 miles to the Agency of Transportation District 2 Office, which will be on the right.

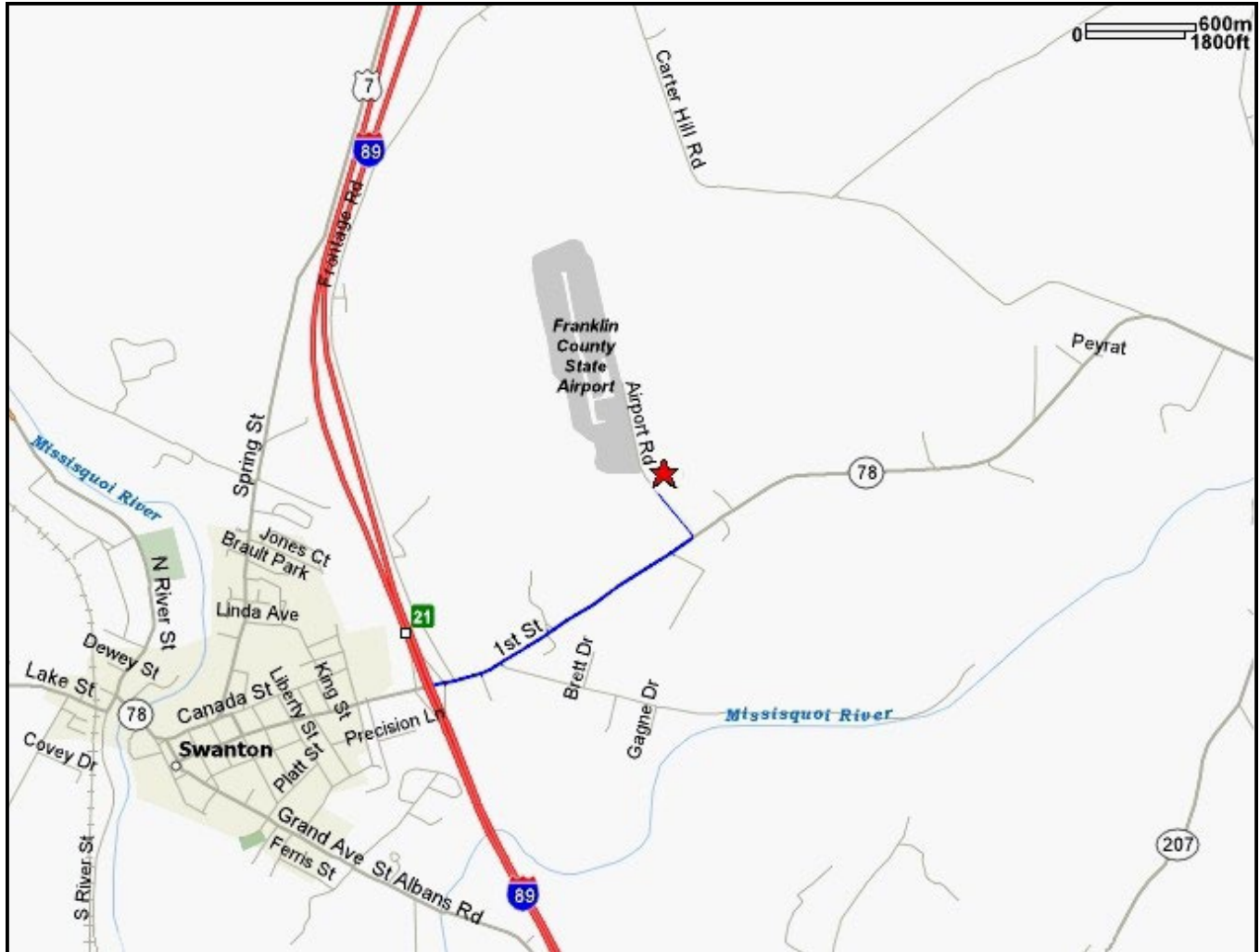
**From North:** Take I-91 South to Exit 4, turn left off the exit onto Route 5, and continue on Route 5 for approximately 3.5 miles to the Agency of Transportation District 2 Office, which will be on the left.

**Parking:** Park in the lot immediately behind the District 2 office. The classroom is located in the District 2 office.

**HIGHGATE**



## DIRECTIONS TO THE VERMONT RIDER EDUCATION PROGRAM'S TRAINING SITES



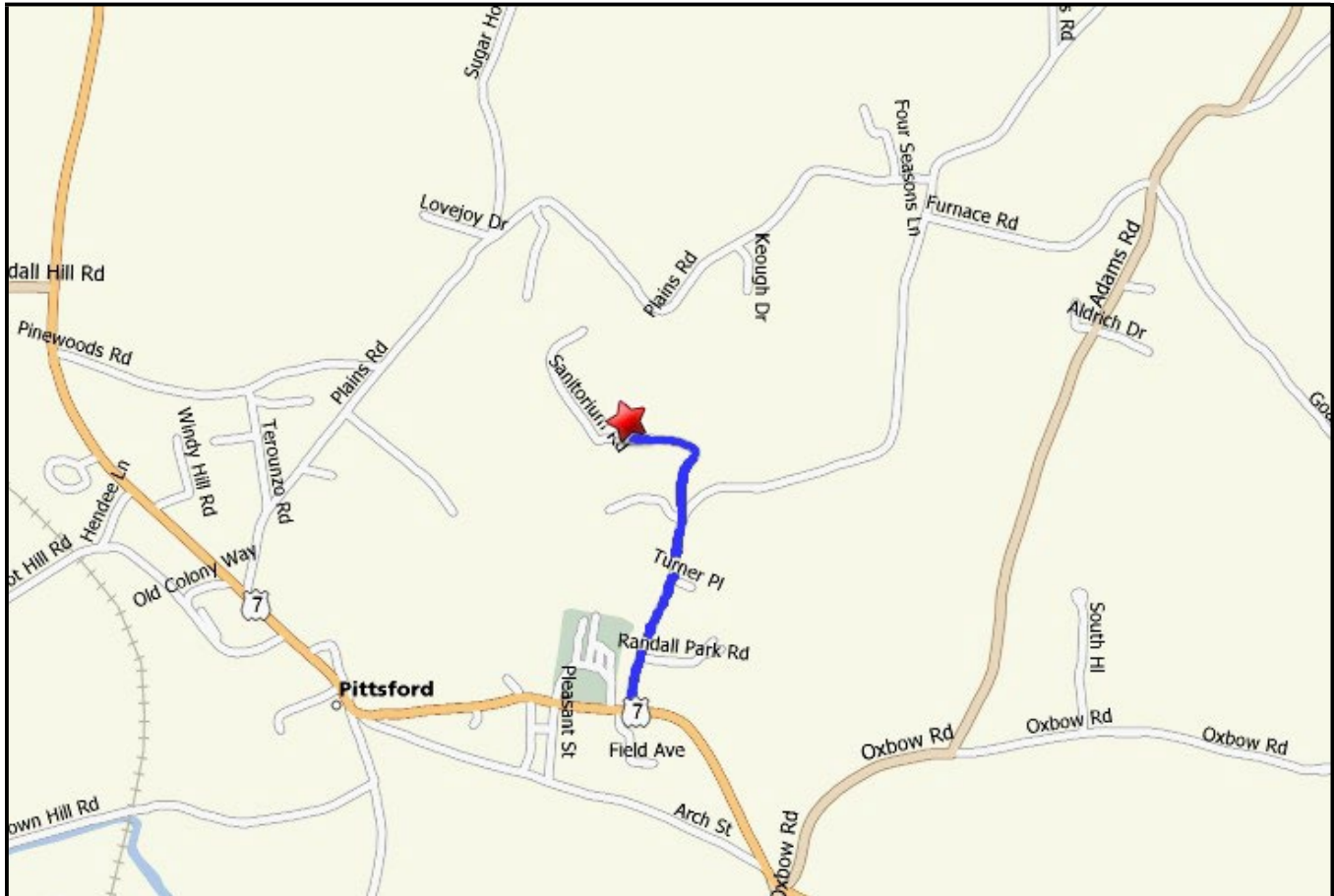
**From I-89:** Take exit 21, turn onto Route 78 East; travel on Route 78 East for one mile; turn left onto Franklin County Airport Road, the training is held at the Agency of Transportation facility which is located on the right 0.4 miles down Airport Road.

**From Route 7:** In Swanton Village, turn east on Route 78 (First St.) at St. Marie's Market (Citgo station). Continue to the intersection of I-89 and follow directions for **From I-89**.



## DIRECTIONS TO THE VERMONT RIDER EDUCATION PROGRAM'S TRAINING SITES

### PITTSFORD



**From the South:** Take U.S. Route 7 north to Pittsford. Not long after entering the village, you will see a building on your right that is painted black and white to resemble a Holstein cow. Take the next right onto Furnace Road after approximately 0.4 miles, and turn at the first left onto Academy Road (Facility entrance). Park in the lot to the left of the main building and follow the signs to the student entrance. **Do not park in the staff/instructor parking area.**

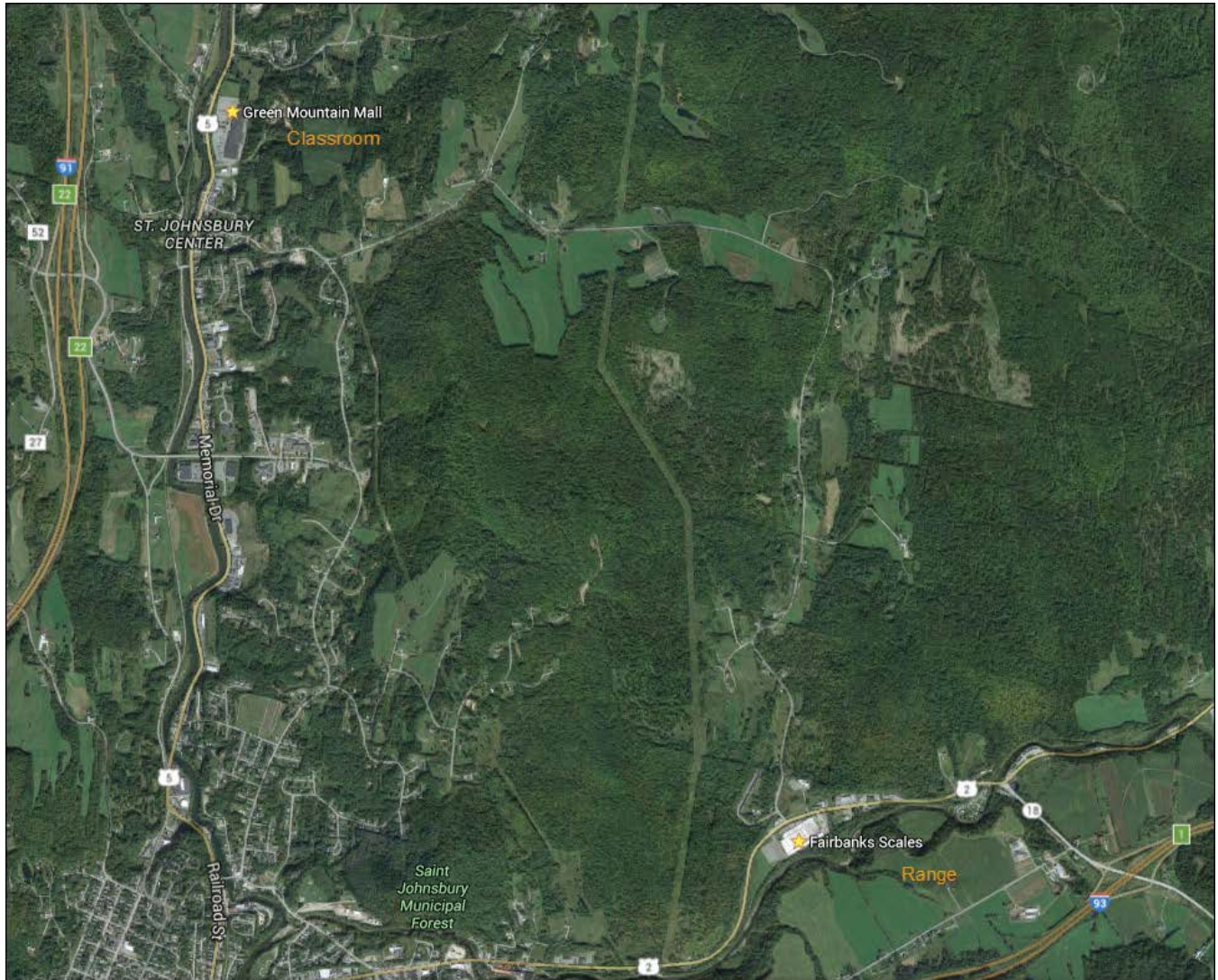
**From the North:** Take U.S. Route 7 south to Pittsford. Once in Pittsford, you will pass two general stores, a library, and Lothrop Elementary School. Just past the school, take a left onto Furnace Road. After approximately 0.4 miles, turn on the first left onto Academy Road (Facility entrance). Park in the lot to the left of the main building and follow the signs to the student entrance. **Do not park in the staff/instructor parking area.**

**Walk around the main building to the driver training pad. Look for a large sign off the driver training pad with a big arrow pointing to the student entrance.**



## DIRECTIONS TO THE VERMONT RIDER EDUCATION PROGRAM'S TRAINING SITES

### ST. JOHNSBURY



**Range (riding) activities are conducted at the Fairbanks Scale.**

**Range From I-91:** Take Exit 19 to I-93; take Exit 1 off I-93; turn left onto Route 18, and continue on Route 18 until you get to Route 2; turn left on Route 2 West and continue for 0.6 miles; Fairbanks Scale is on the left; enter the parking lot on the far side of the building.

**Range From Junction of Routes 2 & 5:** Take Route 2 East and continue for approximately 2.5 miles; Fairbanks Scale is on the right; enter the parking lot on the near side of the building.